



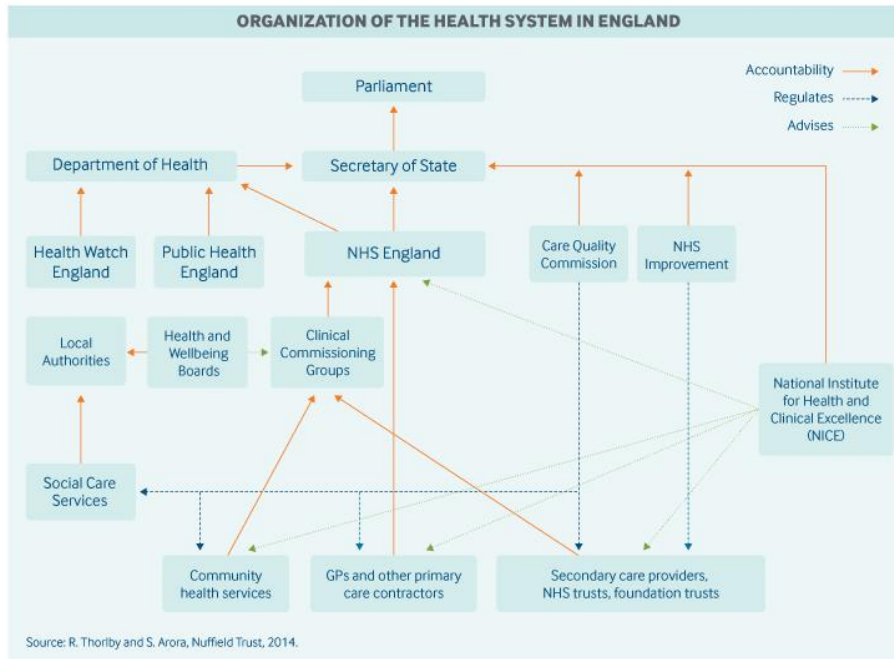
Covid-19 and the English NHS

An overview

Sarah Reed, Senior Fellow, Nuffield Trust

September 2021

Health system basics: Who makes decisions?



- Free at point of use, publicly-funded health care through the NHS
 - General taxation
- Centralised system, main accountabilities sitting with Parliament, Secretary of Health and Social Care, and NHS England and Improvement
- Local commissioners plan, commission, and pay for services – but accountable to national government

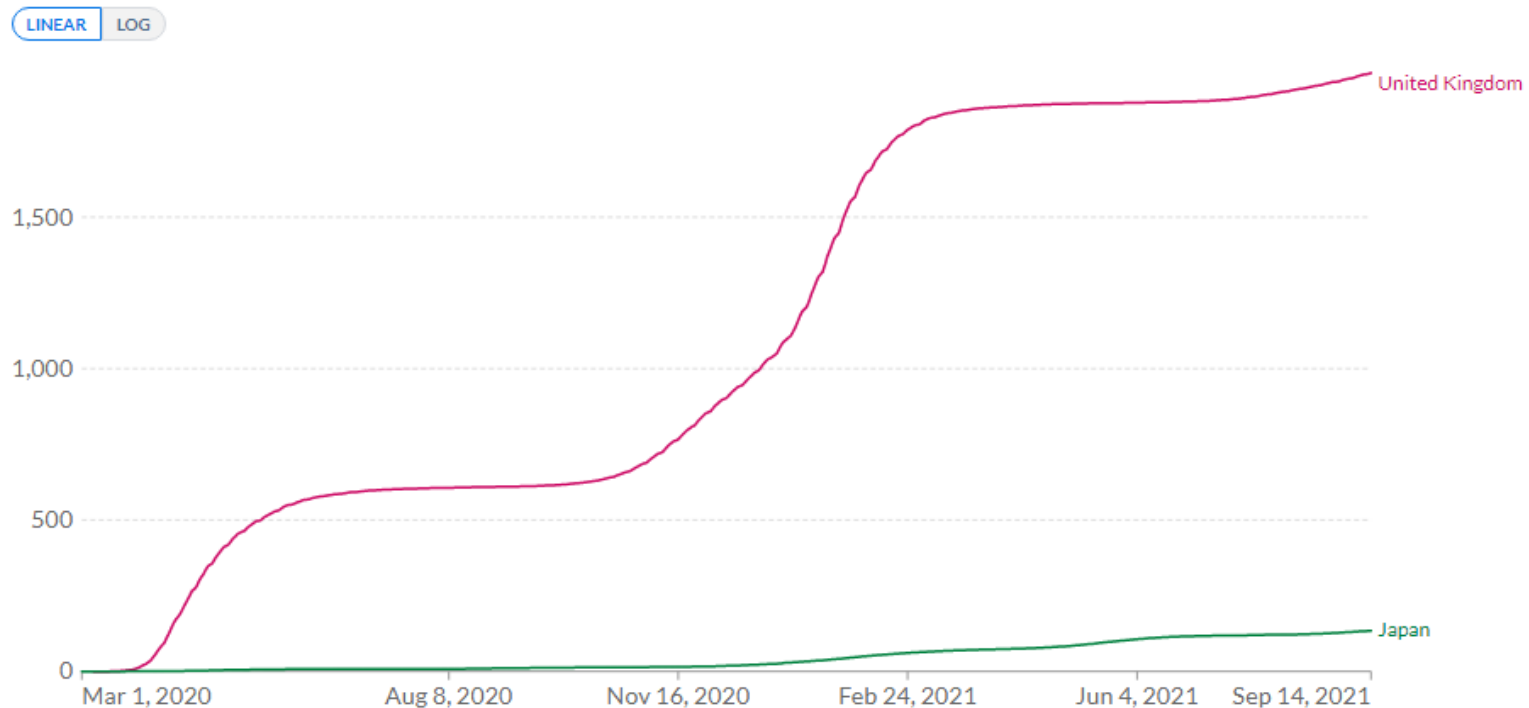
England's record on Covid-19

8th highest number of Covid-19 deaths.

Cumulative confirmed COVID-19 deaths per million people

Limited testing and challenges in the attribution of the cause of death means that the number of confirmed deaths may not be an accurate count of the true number of deaths from COVID-19.

Our World
in Data



Source: Johns Hopkins University CSSE COVID-19 Data

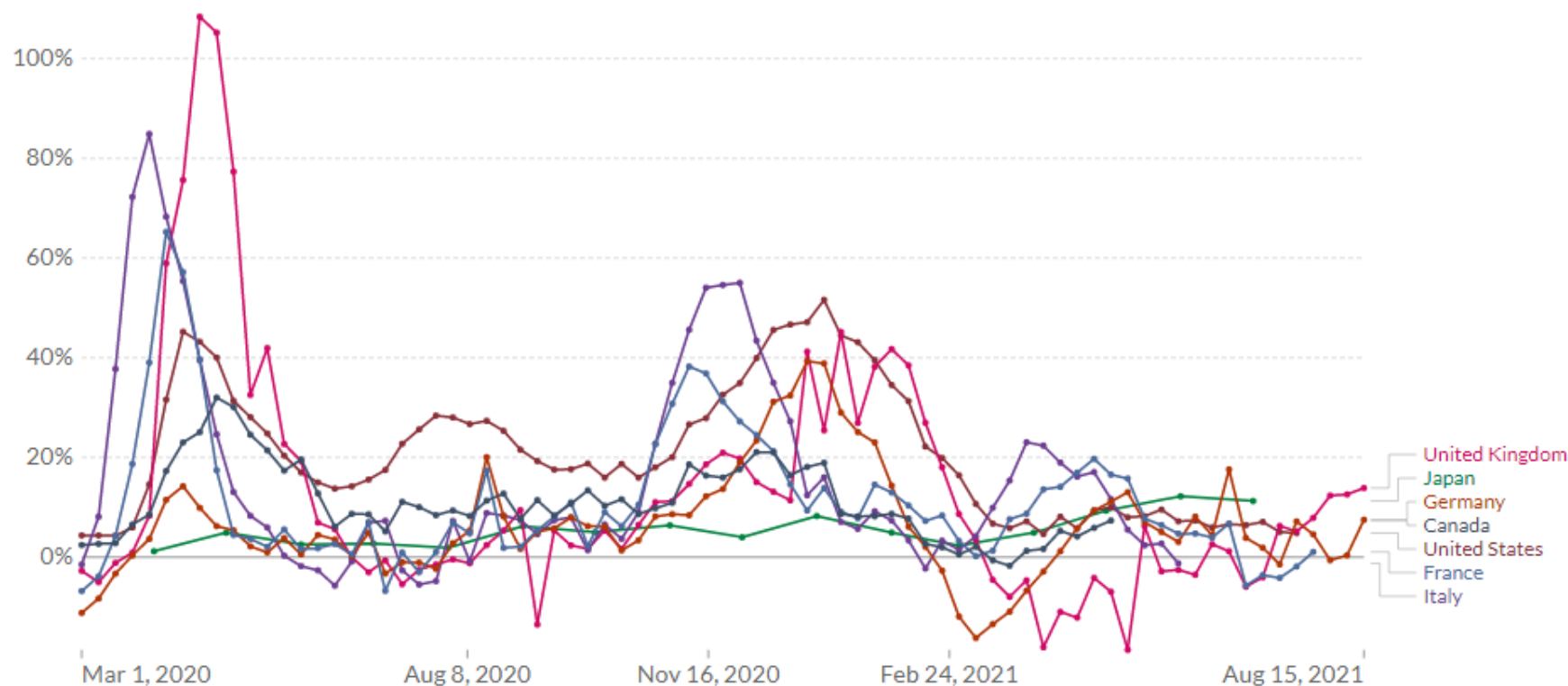
CC BY

International comparisons of Covid-related excess mortality

Excess mortality: deaths from all causes compared to previous years

Shown is how the number of weekly or monthly deaths in 2020–2021 differs as a percentage from the average number of deaths in the same period over the years 2015–2019. This metric is called the P-score. The reported number of deaths might not count all deaths that occurred due to incomplete coverage and delays in death reporting.

Our World
in Data



Source: Human Mortality Database (2021) and World Mortality Dataset (2021)

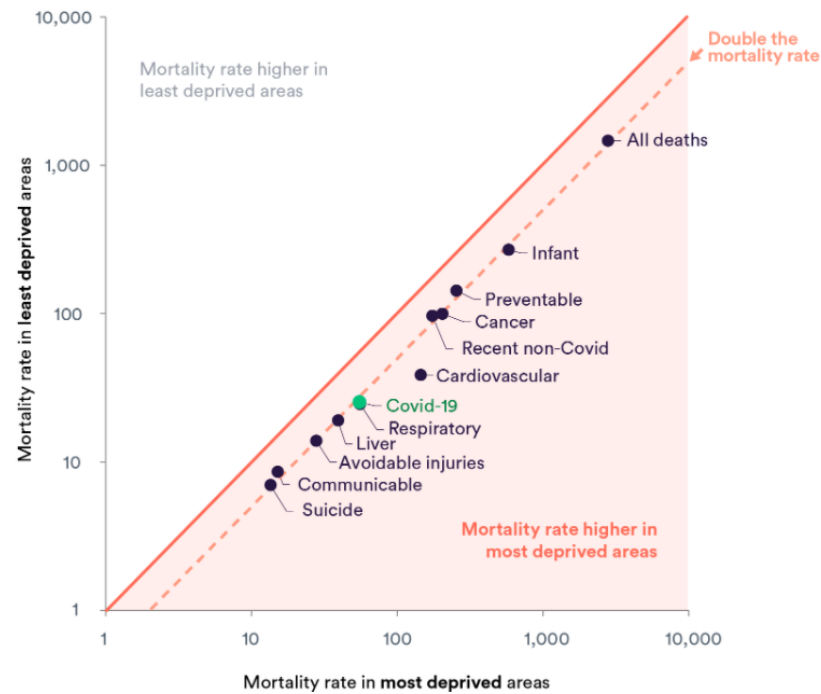
CC BY

The pandemic has exacerbated pre-existing inequalities in UK

Mortality rate for different conditions, per 100,000 people

06/05/2020

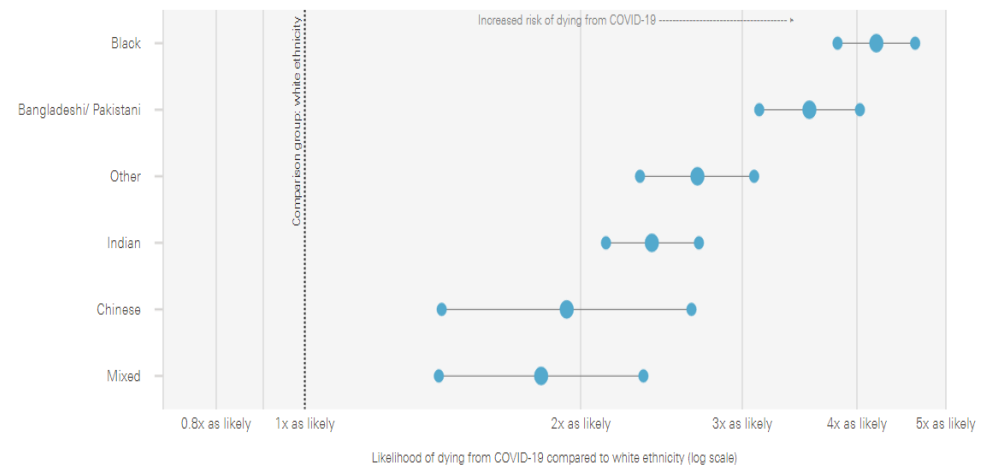
Chart



The risk of COVID-19 related death is more than four times as high for people of black ethnicity than for those of white ethnicity after adjusting for age

Risk of COVID-19-related death by ethnic group and sex, England and Wales, 2 March to 10 April 2020.

Men



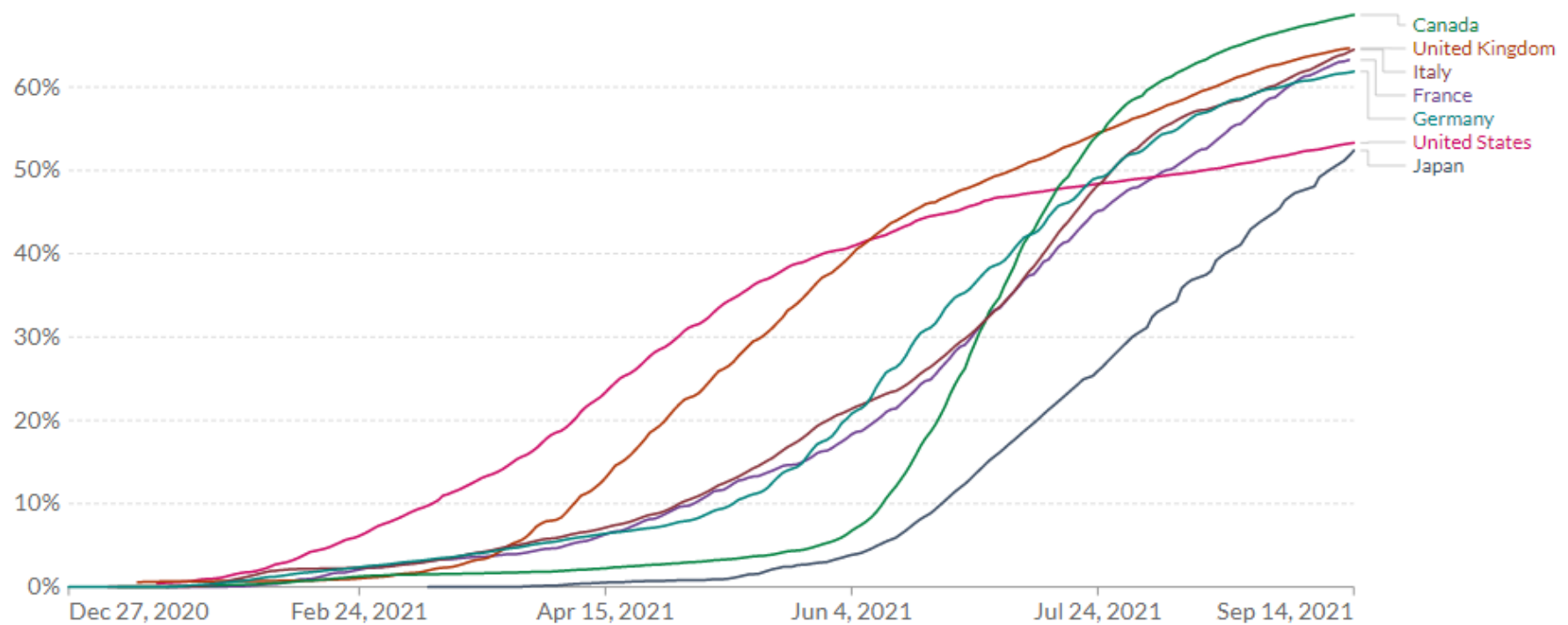
65% of the population now fully vaccinated

Share of the population fully vaccinated against COVID-19

Total number of people who received all doses prescribed by the vaccination protocol, divided by the total population of the country.

Our World
in Data

LINEAR LOG



England's Covid-19 strategy

- Large-scale testing, prioritised by risk
 - Costly and concerns about performance
 - Supported by NHS Covid-19 app (compliance not mandatory)
- Isolation: legally required to self-isolate at home when test positive, experience symptoms, or have been exposed to someone with positive test
 - Challenges with compliance / enforcement / adequate support
- Extended lockdowns:
 - First national lockdown: March 26, 2020 – June 2020
 - Localised lockdowns / social distancing requirements reinstated: July 2020 – October 2020
 - Second national lockdown: November 2020 – December 2020 (Tier system)
 - Third national lockdown: January 2021 – April 2021

Covid-19 health system response

Building surge capacity

Recruiting and mobilising staff

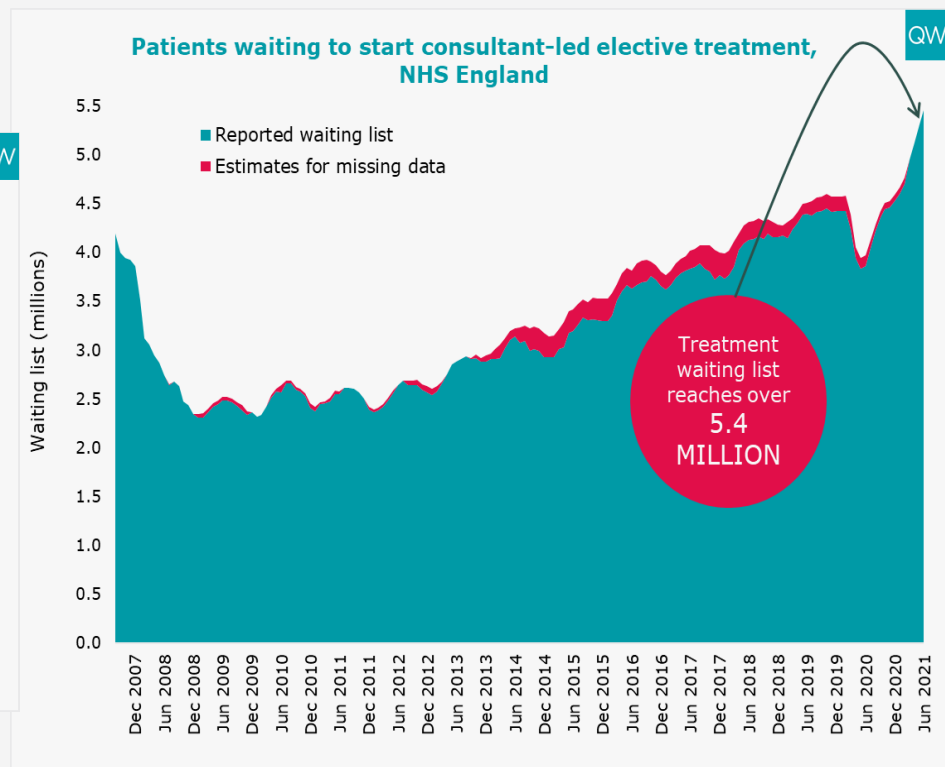
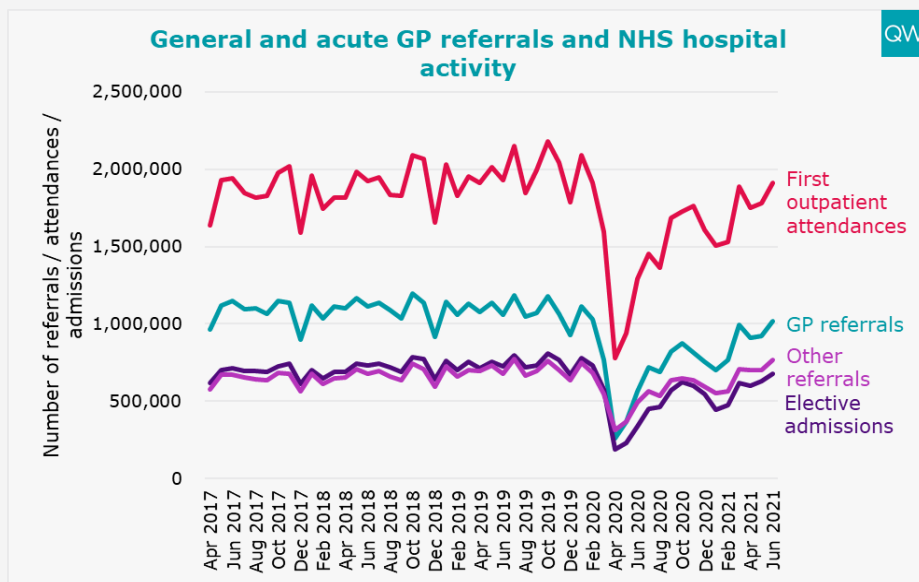
- Re-registered inactive health care personnel / students
- Relaxed registration or hiring processes / visa requirements
- Partnerships with military and private sector
- Redistributed staff into new roles
- Expanded roles within primary and community care

Ensuring acute care capacity

- Partnerships with private sector (beds, equipment)
- Converting existing wards into intensive care units
- Early discharges
- New field hospitals
- Cancelling / deferring routine and elective care
- Digital first

Moving from Response towards Recovery + Resiliency

The backlog of elective treatment



Tackling the backlog – innovations and solutions

Maintaining digital first models

New approaches to waiting list management – clinical validation, pre-triage, referral quality

Hospital and regional collaboration / coordination

Private sector partnerships – outsourcing support

Extending clinical hours

Key challenges / tensions

- Infection control measures – limits on productivity
- Balancing immediate recovery response with addressing long-term challenges
- Workforce burnout and shortages

.... and where did we start from?

Country	Capital expenditure on health as a share of GDP, 2017	Nurses per 1000 inhabitants, 2019	Doctors per 1000 inhabitants, 2019	Hospital beds per 1000 inhabitants, 2019	Occupancy rate of acute care beds, 2017	Median hip replacement wait time days, 2017
United Kingdom Rank	22nd/30	20th/31	26th/31	29th/31	21st/23	8th/15
United Kingdom	0.3	7.8	3.0	2.5	84.3	85
Australia	0.7	11.9	3.8	3.8		119
Austria	0.7	6.9	5.2	7.3	73.8	
Belgium	0.9	11.2	3.1	5.6	81.8	
Canada	0.6	9.9	2.8	2.5	91.6	105
Czech Republic	0.1	8.1	4.0	6.6	70.1	
Denmark	0.6	10.1	4.2	2.6		29
Estonia	0.2	6.3	3.5	4.6	70.4	286
Finland	0.5	14.7	3.8	3.6		81
France	0.6	10.8	3.4	5.9	75.6	
Germany	1.1	13.2	4.3	8.0	79.8	
Greece	0.2	3.4	5.5	4.2	61.6	
Hungary	0.2	6.6	3.4	7.0	65.5	55
Iceland	0.2	15.5	3.9	2.8		
Ireland	0.4	12.9	3.3	3.0	94.9	
Italy	0.4	6.7	4.0	3.1	78.9	49
Latvia	0.4	4.3	3.3	5.5	71.1	
Lithuania	0.2	7.8	4.6	6.4	73.2	
Luxembourg	0.6	11.7	3.0	4.3	70.7	
Netherlands	0.9	11.2	3.6	3.2	65.4	52
New Zealand	0.5	10.3	3.4	2.6		73
Norway	0.5	18.0	4.9	3.5	80.7	114
Poland	0.4	5.1	2.4	6.5		246
Portugal	0.7	6.9	5.1	3.5	66.8	111
Russia	0.1	8.5	4.1	7.1		
Slovenia	0.4	10.1	3.2	4.4	69.5	
Spain	0.8	5.9	4.0	3.0	75.3	130
Sweden	0.6	10.9	4.3	2.1		75
Switzerland		17.6	4.3	4.6	82.0	
Turkey	0.3	2.3	1.9	2.9	68.0	
United States	0.6	11.9	2.6	2.9	64.0	