



**ANNUAL REPORT
AND ACCOUNTS**
2018/19

CONTENTS

We are the Spinal Injuries Association (SIA), the expert voice and leading source of support and information to people with spinal cord injury. We help people with spinal cord injuries lead fulfilled lives.

A time for change	3
Spinal cord injury at a glance	4
Why we're here	5
A charity with clear direction	6
Achievements and performance	7
Putting our members first	8
Supporting those in greatest need	9
Providing clinical expertise	10
Raising awareness through education	11
The go-to charity for advocacy and advice	12
Ensuring your voice is heard	14
A force for change	16
Reaching new audiences	17
The lifeblood of our organisation	18
Structure, Governance and Management	20
Financial statements	
Independent auditor's report	24
Consolidated statement of financial activities including the income and expenditure account	26
Consolidated Statement of financial position	27
Consolidated cash flow statement	29
Notes to the financial statements	30
Thanking our supporters	42



A TIME FOR CHANGE



Dr Rupert Earl
Chair of Trustees



Nik Hartley OBE
Chief Executive Officer

In an ideal world, everyone who sustains a spinal cord injury, facing a life with permanent, complete or partial paralysis, would receive specialist healthcare from the moment of injury and, crucially, throughout the rest of their life. Following rehabilitation, they would be able to return home to their loved ones, or at the very least to the same town where they've always lived, with a care system that can continue to support them. People with the highest levels of injury would receive the support they need, in their own homes, to enable them to live fulfilled lives. No one would feel abandoned, isolated or afraid.

However, this simple vision of a fair and just society is not close to reality. Indeed, in the last few years, a crisis in even the basic primary care for spinal cord injured people is emerging. For the duration covered by this Annual Report – with all its stories of personal triumph, heartwarming collaboration and new and expanding charity services – it is important to remember that every four hours, someone suffered a trauma or medical condition that led to a spinal cord injury and partial or complete paralysis, and yet only one in three of those will have been treated in a specialist setting. And none are guaranteed specialist healthcare once back in their community.

In that context, our pilot SCI Nurse Specialist service, which we set up over two years ago to respond to this, has been increasingly inundated. Our two amazing nurses in the field are, at the time of writing, booked up until 2020. Even with their superhuman capacity, they cannot respond to the increasing cries for help from people who are suffering at the hands of inadequate, inappropriate or absent healthcare. You will not be surprised to learn we are launching a major appeal in the coming twelve months to change this situation by significantly scaling up that pilot to a fully-evaluated, long-term intervention.

Our 11,000 members are a diverse national network – a reflection of the rich tapestry of UK society. They are joined together by one desire – to help themselves and each other, their friends, their workplace, their community – the country indeed – to understand the realities of spinal cord injury and unleash the potential of every member to lead a fulfilled life blocked only by societal barriers. Some of our members want to go to university, others want to start a new relationship or become a parent. Some would like to spend time with their grandchildren, learn a new hobby or simply make themselves a cup of tea again. To serve our members better we are committed to building an Association of Partners to increase our network of support – charity, business, individual, politician or public service – who are committed to making sure every single spinal cord injured person across the country can benefit.

So, as you enjoy reading through the amazing work of our colleagues, staff, volunteers and partners alike, be assured that we are both committed to building an even stronger national network, with success measured by a simple mantra – “every person with a spinal cord injury from whatever stage in their life can access the relevant support they need”.

It is the start of an exciting and transformative chapter for SIA. None of it will be possible without the extraordinary generosity of our amazing lifelong supporters like you. Please continue! Our members across the country will be eternally grateful.

SPINAL CORD INJURY AT A GLANCE

It is estimated that **50,000 people** live with a spinal cord injury in the UK, with **2,500 people** sustaining an injury every year.



Causes of spinal cord injury **resulting from an accident** include falls, road traffic accidents and sporting accidents.



Causes of spinal cord injury as a **result of illness or condition** include degenerative conditions, infection and tumours of the spine.



The effects of spinal cord injury include full or partial paralysis, as well as loss of mobility, bladder and bowel control, and sexual function. Many people also live in pain. The combination of these various consequences inevitably can also **impact on people's psychological wellbeing**.



There are **11 spinal cord injury centres in the UK**.



Research projects are taking place to discover how to repair the spinal cord, but at present it is **not yet possible** to do so.

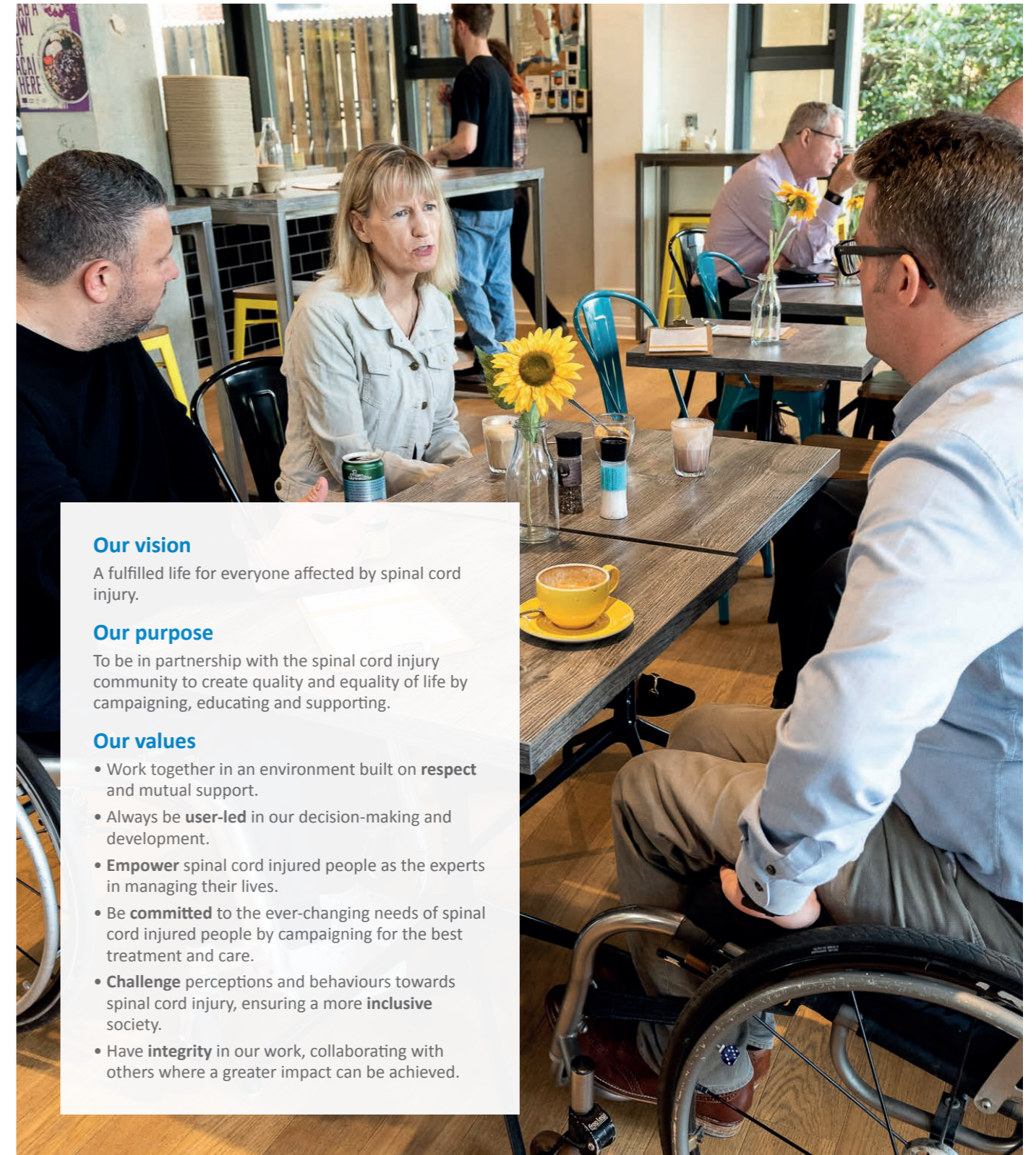


During 2017-18:

- **2,429** patients were referred to SCI Centres in England, of which **63%** were not admitted.
- **33%** of injuries were caused by accident and **67%** were caused by illness or a medical condition.
- The most common cause of injury resulting from an accident was falls – **60%**.
- The most common cause of injury resulting from an illness or condition was disc prolapse – **15%**.
- **51%** of injuries resulted in paraplegia and **49%** tetraplegia.
- **81%** of injuries were incomplete and **19%** were complete.
- **67%** of people admitted to an English SCI Centre were male, **33%** female.
- The biggest age group of new injuries was 65-69 years and **44%** of all admissions were over the age of 60.

* Findings sourced from The Annual Statement of the National Spinal Cord Injury Database 2017-18. Statistics based on people admitted to SCI Centres in England, 2017-18. Most publicly available statistics at the time of going to print.

WHY WE'RE HERE



Our vision

A fulfilled life for everyone affected by spinal cord injury.

Our purpose

To be in partnership with the spinal cord injury community to create quality and equality of life by campaigning, educating and supporting.

Our values

- Work together in an environment built on **respect** and mutual support.
- Always be **user-led** in our decision-making and development.
- **Empower** spinal cord injured people as the experts in managing their lives.
- Be **committed** to the ever-changing needs of spinal cord injured people by campaigning for the best treatment and care.
- **Challenge** perceptions and behaviours towards spinal cord injury, ensuring a more **inclusive** society.
- Have **integrity** in our work, collaborating with others where a greater impact can be achieved.

A CHARITY WITH CLEAR DIRECTION

As a user-led Charity, our members and their needs are at the heart of everything we do. In 2017, they told us how we could improve the quality of their lives. This feedback formed the basis of our five-year strategy, which has steered our work and service delivery this year.

We've completed the second year of our strategic plan, Fulfilled Lives. The strategy was the product of extensive conversation with key stakeholders, especially service users and others in the spinal cord injury (SCI) community. Those conversations have continued throughout 2018/19 to ensure that we place the experiences of SCI people at the centre of everything we do.

1. Influence the quality of health and care services received by SCI people.
2. Support the wellbeing of SCI people and their families.
3. Enhance the inclusivity of SCI people in society.
4. Build engagement with the SCI community to make our voice stronger.
5. Deliver existing and new high-impact services to support SCI people. To achieve these ambitious and vital objectives, we have continued to build productive relationships with others who share our vision of a fulfilled life for every SCI person – other charities, the NHS and the wider health and social care system, as well as our friends in the legal sector and beyond.

Our performance-monitoring framework keeps us on track and supports SIA's Leadership Team. Key performance indicators from across the Charity are measured and reviewed on a quarterly basis, and areas requiring any additional focus are identified. By doing so, we are able to report to the Governing Council and the wider SCI community on our progress in meeting our vision.

The following pages of this report give an insight into the number of people we have supported this year and the impact our services have had on their lives.



ACHIEVEMENTS AND PERFORMANCE

With a workforce of 49 employees and 200 volunteers, this year we provided a range of services to support our membership of more than 11,000 people. Whatever their connection to SCI – whether it be personal or professional – we ensured that everyone who needed to access expert information, advice and support was able to do so when they needed it most.



ADVICE LINE

1,966

1,966 enquiries were addressed by the Advice Line and 100% of callers would consider using the service again in the future. Of those calls, 118 were dealt with by the Advocacy service to provide more in-depth support on topics including Disabled Facilities Grants, travel issues and car parking.



SCI NURSE SPECIALIST SERVICE

225

225 SCI people were supported by our SCI Nurse Specialists.

SIA ACADEMY

293

293 healthcare professionals attended CPD-accredited education and training sessions delivered by the SIA Academy.



VOLUNTEERS

200

200 volunteers supported the Charity, contributing 4,631 hours of support. 58 of our volunteers have an SCI.



PEER SUPPORT

4,659

4,659 support sessions were provided to SCI people in hospitals, NHS specialist SCI Centres, out in the community and in people's homes.



CASEWORK

107

107 people received Continuing Healthcare Casework support that specifically met their needs to live independent lives within the limits of their disability.



65

65 people received Social Care Casework support that specifically met their needs to live independent lives within the limits of their disability.



1,382

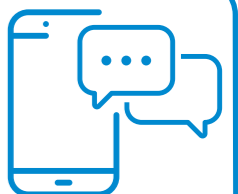
1,382 support sessions were provided to families and friends of SCI people in hospitals, NHS specialist SCI Centres, out in the community and in people's homes.



TELEPHONE COUNSELLING

152

152 telephone counselling support sessions were provided to SCI people and their families and friends.



PUTTING OUR MEMBERS FIRST

Whether you have an SCI, are a relative or friend of an injured person, or a healthcare professional responsible for the care needs of someone living with an SCI, membership of SIA is free.



Our members are central to everything we do and we are committed to ensuring that every SCI person receives the care and support they need to lead a fulfilled life. So, when Val Thompson from Lancashire unexpectedly had her NHS-funded healthcare package withdrawn, she knew that SIA would be able to help.

In 2013, Val fell down the stairs at home and broke her neck. In that moment, her life changed forever. Val spent the following year in hospital and with an NHS Continuing Healthcare package in place, was finally able to return home to live with her husband again. They were now able to start rebuilding their lives together.

However, in 2017, after what should have been a routine reassessment, Val's care was withdrawn with just five days' notice. A letter from her local NHS funder said, "Following discussion of all supporting evidence, NHS Midlands and Lancashire Commissioning Support Unit concluded that you are no longer eligible for fully-funded Continuing Healthcare. Although you have a number of care needs, they are routine, predictable and non-complex in nature."

Val was now expected to rely on her husband to act as a carer and pay for most of her care herself.

Val was distraught. She told us, "I just burst into tears. I need the carers so I can live at home. My care is complex; it's not a case of needing someone to just drop in to make a cup of tea. The assessment was no more than a brutal box-ticking exercise and it has made my life hell."

Working with Val, we demanded that her care needs were reassessed. At the meeting that followed, Val was declared eligible for funding, had her care reinstated and even her care package increased by seven hours per week.

Our SCI Nurse Specialist, Carol Adcock said, "This is something I see every day – arbitrary cuts in care that are destroying people's lives. We are here to ensure that every SCI person gets the care and support they need, so that no one should ever find themselves in Val's situation."

Val was just one of the 107 people we supported this year via our Continuing Healthcare Casework service. At present, no other charity provides this specialised casework support for SCI people. Along

with all our other vital services, we support our members at their greatest time of need and will continue to do so in the future.

Whether you have an SCI, are a relative or friend of an injured person, or a healthcare professional responsible for the care needs of someone living with an SCI, membership of SIA is free. Members can access a range of benefits including our Peer Support and SCI Nurse Specialist services, Freephone Advice Line, NHS Continuing Healthcare/Social Care Casework support, Telephone Counselling service, as well as an extensive range of online resources. For further information, please go to www.spinal.co.uk.

"I just burst into tears. I need the carers so I can live at home. My care is complex; it's not a case of needing someone to just drop in to make a cup of tea."

SUPPORTING THOSE IN GREATEST NEED

Two thirds of people who sustained an SCI this year did not receive specialist rehabilitation. For the majority, this will harm their ability to reach their potential and rebuild their lives. Our Peer Support service continues to play a vital role in ensuring that no one is left isolated and alone, during the crucial period of rehabilitation or throughout the rest of their lives.

SIA's Peer Support service, delivered by a 13-strong team who all have personal experience of SCI, provides vital support to many of these people whether they are in district general hospitals, major trauma centres, neurological rehabilitation units or living at home.

This year, the team supported 837 people in non-specialist settings, a 20% increase on the previous year. This support has made a huge life-changing difference. Of the users who evaluated the service, 100% stated that as a result they were more positive about the future, happier, had higher self-esteem and felt less isolated. Furthermore, 100% rated the service as either 'good' or 'excellent'.

Whether someone has benefitted from specialist rehabilitation or not, our experience in delivering support from the onset of injury, throughout the rehabilitation process and into the community, tells us that it's often during the period immediately following discharge that our support is needed most. The move from hospital to home is frequently daunting. The challenges of securing an appropriate care package, adapting or finding a home, returning to work etc., can create a great deal of stress and anxiety. This year, the Peer Support Team has supported 475 people following their discharge, a year-on-year increase of 21%.

We want everyone affected by SCI to benefit from SIA's Peer Support service, so that no one is left behind as they rebuild their lives. To help achieve this, we have been supported by 15 Peer Support Volunteers, who all live with



SCI and provide hope, confidence and practical skills to SCI people in hospital and at home. Together, they have supported 207 SCI people and their families and friends this year.

Here is just one example of how life changing the right support can be:

"Chris has been amazing in the support given to both me and my husband. He came to visit me a few days after my operation and was so friendly, calm and positive. He encouraged and reassured me that I have a future in this strange new world I have found myself in. I sent Chris an email at my lowest point, to which he immediately responded, and it was so good to later share with him positive news as well. Chris visited me in three different hospitals. Above all, he is a shining example of the fact that there really is life to be led after an SCI. I could not have got through this incredibly difficult time without his support."

This year, the team supported 837 people in non-specialist settings, a 20% increase on the previous year. This support has made a huge life-changing difference.

SCI NURSE SPECIALISTS PROVIDING CLINICAL EXPERTISE

With a high proportion of injured people not receiving care in specialist SCI Centres, the demand on our SCI Nurse Specialists for their life-saving clinical expertise is at an all-time high.

Of the 2,500 people who sustain an SCI each year, only 850 will receive specialist care in an SCI Centre in England. The lack of knowledge and understanding of SCI amongst healthcare professionals working in non-specialist settings is a grave cause for concern. As a result, many of our members receive poor, inadequate and, at times, dangerous levels of care.

Whether someone is in the immediate aftermath of an injury, or readmitted to a district general hospital many years later, our SCI Nurse Specialists work alongside the treating healthcare professionals to educate and inform them of the unique and essential care needs of SCI people. For example, people living with SCI are at risk of secondary complications such as pressure sores and Autonomic Dysreflexia – a potentially fatal cardiovascular complication. Our SCI Nurse Specialist service empowers our members to get the expert clinical support that they need, regardless of where they are cared for.

This year, 225 SCI people have been supported by our SCI Nurse Specialist service – an increase of 26% on the previous year. The feedback we received from those who accessed the service once again highlighted its importance:

- 86% of SCI people rated the overall level of support they received as 'good' or 'excellent'.
- 100% of friends and family members rated the overall level of support they received as 'good' or 'excellent'.
- 100% of healthcare professionals have a better knowledge and awareness of the needs of SCI patients.



For those we were able to support this year, here is an example of the impact it had on two of our SCI Nurse Specialist service users.

"Debbie was professional as she gave practical advice and information. She was a breath of fresh air compared to some of the healthcare professionals we have encountered. We have already begun to implement the advice she gave."

"The outcome of my Continuing Healthcare assessment is yet to be decided. However, with Carol's assistance, I've avoided a refusal. Carol has been splendid throughout the process in terms of her accessibility and the assistance she has offered. It's like having a lawyer by my side who has helped prevent social services from simply rolling me over through the process. I cannot emphasise enough how important she has been throughout! Thank you very, very much."

As the only charity in the UK to provide this clinical support, there is much more work to be done. Due to a severe shortfall in specialist care, the demand for the service is growing at a rate that our two SCI Nurse Specialists simply cannot meet, and it's vulnerable SCI people who are facing and living with the consequences of this. Therefore, one of our priorities in the coming year is to launch an appeal to enable us to expand the service, so that we can provide clinical expertise to all of our members when they are in need of specialist care.

Of the 2,500 people who sustain an SCI each year, only 850 will receive specialist care in an SCI Centre in England.

RAISING AWARENESS THROUGH EDUCATION

We know that many healthcare professionals do not have the clinical knowledge to safely care for SCI people in non-specialist settings. We hear too often the harrowing experiences of our members who have received poor care in such settings. That is why we provide education and training to as many healthcare professionals as possible through the SIA Academy.

We want more healthcare professionals to understand the unique and complex care needs of SCI people, and to have the skills to provide appropriate care. This year, we again received a high number of training requests and the SIA Academy delivered CPD-accredited education and training to 293 healthcare professionals.

Carol Adcock and Debbie Green, our highly experienced SCI Nurse Specialists, trained registered and non-registered healthcare professionals who work in non-specialist settings. In addition, our training courses for case managers, solicitors and expert witnesses were in demand again this year.

In 2018/19, we ran two healthcare professional Study Days:

1. SCI Acquired through Illness or Disease, which received 56 bookings.
2. Continence Matters: Introduction to Managing the Neurogenic Bowel in SCI, which received 64 bookings.

The safe and appropriate provision of bowel care is one of our members' biggest concerns, which is why we delivered 22 Managing the Neurogenic Bowel Skills & Competency Training days. We also held three in-house Good Clinical Practice in SCI Study Days, which enabled healthcare professionals to learn important key skills in their own working environments.

Positive feedback from our training includes:

"This course gave an excellent overview of managing an SCI patient. It was especially useful as I work in a hospital without a specialist unit."

"It was a really excellent day! The training was fit for purpose, delivered by excellent and experienced trainers."

"I haven't encountered SCI patients before, so learning about the pathophysiology and background, as well as the skills required for care, will help me greatly in assisting our patients during neuro rehabilitation."

More than just a home delivery service

Many SCI people require a range of prescriptions and health-related products to manage their day-to-day care needs. It takes a lot of time and organisation to keep on top of it all. That is why in 2014 we launched SIA Healthcare, our home delivery service, to take on this responsibility and to give SCI people the freedom to focus on the more important things in life.

Established in partnership with Bullen Healthcare, SIA Healthcare provides a dedicated home delivery service for our members to meet all urology, stoma, pharmaceutical and lifestyle needs.

The service has gone from strength to strength and now has 2,795 registered service users. Read on to find out how SIA Healthcare helped Brian Hunter, who sustained his injury in 2005.

"I had a car crash at work, which left me with a condition called epidural fibrosis. It causes scar tissue on the spinal cord and leaves me in a lot of pain. I'd been with my pharmacy for many years but I had difficulties when my medication changed, which can happen a lot when you first sustain an injury. When you live with pain, you have to get the right balance with your medication, so the tablets are constantly changing. Therefore, the relationship with your pharmacy is important but for me it always felt like a battle."

"I first heard of SIA Healthcare when I read a leaflet and I thought it was too good to be true. I phoned up and found out more about the service and the switch to SIA Healthcare was easy. My dedicated

SIA Healthcare adviser, Julie, organised getting my prescription from my GP and made sure all my medications were correct. For me it took just one phone call.

"If I could give a message to Julie and the team, it would be to say 'thank you'. You don't realise how much comfort you have given me and how much pressure you have taken off me. I would 100% recommend the service to other people."

SIA Case Management – planning future care needs

In March 2018, we launched SIA Case Management – a new specialist venture. The unique service works to identify, plan and meet the long-term care needs of SCI people with a personal injury legal settlement to help them rebuild their lives.

In partnership with Bush and Co Rehabilitation, the UK's largest provider of assessment case management and expert witness services, we are pioneering a new joint activity to establish an industry-leading service.

As well as supporting SCI people who have a legal settlement to ensure they receive the care and support they need, SIA Case Management will generate long-term income to sustain the rest of SIA's services, strengthening our support for all SCI people.

SIA Healthcare and SIA Case Management are crucial enterprise activities, as the funds generated from both enable us to sustain and offer our other services. We will continue to grow the service users of both SIA Healthcare and SIA Case Management, so that we can continue to support all our members now and in the years ahead.

THE GO-TO CHARITY FOR ADVOCACY AND ADVICE

Trying to understand SCI and all the complexities of life that are associated with it can be difficult – especially for those newly injured, but also for people who have been living with an injury for many years. That is why our Advocacy services remain some of the most used within the Charity. For SCI people and their families and friends, who often don't know where to turn for help, the expert information and advice that we provide is empowering and transformative.

This year, we responded to 1,966 calls to our Advice Line on topics as wide ranging as support with benefits applications to truly heart-rending cases of lack of care provision or delays in treatment.

With SCI being a non-improving condition and those with high levels of paralysis being unable to care for themselves, many people will need the assistance of carers to enable them to survive and live fulfilled and active lives. For those who are eligible, this care is provided by NHS-funded Continuing Healthcare (CHC). Yet despite this, we've seen a sharp rise in the number of members being turned down for care that they have received for years when they are reviewed, despite no improvement in their condition. We have also listened to harrowing stories from members who have had their care packages savagely cut. That is in addition to our newly injured members who have to fight to get a suitable care package when they leave hospital and return home.

Every day, our Advocacy Team receives calls and emails from members worried about their CHC packages. We have a vast array of resources and support available to our members. For those completely new to it, we have a guide to CHC that provides advice when preparing for an assessment. We also have a casework service where we can support members with their assessment or, where necessary, their appeal. Such is the demand for help that this year we have launched our CHC Online Learning Tool, which takes those new to CHC through the process in an easy-to-watch video.

Where possible, and if they need that support, we have attended assessments of CHC eligibility to support members to ensure that decision makers understand every aspect of SCI. We find very few CHC Assessors have any knowledge of SCI and, critically, factors such as Autonomic Dysreflexia are often marginalised or even dismissed completely.

There is a wealth of knowledge and experience within the team and we have been able to put this to excellent use this year:

"We found the level of support received from you and others at SIA to have been incredible."

"Dad shared with me the letter you drafted on his behalf for the appeal against the cessation of his Primary Health Need [CHC] funding. It's a powerful and comprehensive document, clearly illustrating the appalling ludicrousness of the situation."

Looking to the future, we are already adopting a philosophy that 'prevention is better than cure'. We have an excellent success rate in supporting members with

their initial assessment. Where we can, we will attend meetings with the SIA member, supporting them beforehand to go through the assessment and reiterating points to raise. We work closely with the Peer Support Team, some of whom have personal experience of CHC, and we are using that local knowledge and experience to reach members who need support in locations that would otherwise prove costly to reach from our head office in Milton Keynes.

Clinical Commissioning Groups are under increasing pressure to cut their budgets and CHC packages are a prime target. Without SIA's Advocacy Team, scores of SCI people would not get the care packages they need and deserve; their health would deteriorate, their wellbeing and survival would be in jeopardy, and they would stand little or no chance of a fulfilled life.



ENSURING YOUR VOICE IS HEARD

More SCI people are missing out on essential healthcare services, as specialist SCI Centres and local health authorities deal with unprecedented demand and ever-reducing budgets. A strong voice in Parliament is vital to bring the experiences of SCI people to the attention of the Government. This year, the Public Affairs Team has continued to campaign hard to keep the needs of SCI people at the top of the political agenda.

According to The Annual Statement of the National Spinal Cord Injury Database, in 2017/18 nearly 2,500 people were referred to an SCI Centre service – two-thirds of whom received no support from a specialist SCI Centre. Meanwhile, the NHS is seeking to reduce expenditure on Continuing Healthcare (CHC) by £855m, despite the news that SCI people are finding it even harder to obtain suitable care packages for their needs.

We support members who are let down by the system. But it's also vital that we raise these issues with decision makers to bring significant change to the lives of SCI people. Our Public Affairs Team raises these concerns at all levels of government, working with civil servants, parliamentarians and a coalition of other disability organisations to find solutions to the crucial issues affecting our members.

Success for future specialist SCI health services

SIA continues to fight for improvements in specialist SCI health services. At the end of a protracted sign-off process, NHS England agreed to the creation of an Operational Development Network (ODN) for the SCI Service. The ODN is a network of healthcare professionals and users across the care pathway that will have responsibility for improving care standards of SCI people by reducing the variation between the specialist centres, developing best practise and ensuring better outcomes for SCI people.

The ODN has the potential to transform SCI services – SIA's key objective from the recommendations of NHS England's Service Review in 2017. We worked



with NHS England on this review and continue to lobby for the other key recommendations – most notably an increase in the number of SCI beds, particularly for ventilated SCI people.

Speaking up at parliament

This year, we met with more than 15 parliamentarians to spread the word of our campaigns, asking them to raise Parliamentary Questions, take action in their constituencies or to write to ministers on our behalf. We also met with ministers to raise issues directly with the Government. We challenged Sarah Newton, the Minister of State for Disabled People, Health and Work, on disability benefits and the forthcoming Green Paper on Social Care. We also sought the support of Lord O'Shaughnessy, Parliamentary Under Secretary of State at the Department of Health, on the continued closure of beds in SCI Centres over winter.

As the secretariat for the All Party Parliamentary Group on SCI, we continued to influence the agenda in parliament. The group met to discuss winter bed closures in SCI Centres and the Government's response to the Public Accounts Committee's report on NHS Continuing Healthcare.

We also met with ministers to raise issues directly with the Government. We challenged Sarah Newton, the Minister of State for Disabled People, Health and Work, on disability benefits and the forthcoming Green Paper on Social Care.

Engaging with the civil service

This year we continued to work with statutory bodies, government initiatives and representative groups to shape their decision-making. We work closely with NHS England and the Department of Health on initiatives such as the Strategic Improvement Programme and the review of the National Framework for NHS Continuing Healthcare. We also continued our work with the Equality and Human Rights Commission in its pursuit of Clinical Commissioning Groups that are introducing policies to deliver care-at-home packages in nursing homes.

Our involvement in groups such as NHS England's Clinical Reference Group for Spinal Services (which advises NHS England on the commissioning of SCI services), means that we continue to ensure that the patient voice is central to all decisions made about the SCI Centre service.

Developing policy

It's important to explore new directions to develop our campaigns and the tactics to achieve our goals. In February, we held a roundtable event at the Law Society to discuss whether there should be a presumption of eligibility for NHS CHC for tetraplegic SCI people injured at C5/6 or above.

The high-level discussion gave us a greater understanding of the challenges to such a campaign and led us to develop a new approach for the future of the campaign, which we will develop into a manifesto in the new financial year.

Strengthening our voice

We continue to work closely with other organisations and alliances to amplify our voice and share our knowledge and expertise in our key campaigning areas. We work with other SCI organisations on our campaigns such as Aspire, the Back Up Trust and the Cauda Equina Syndrome Association, who share our demands for high quality, specialist health services. Working on a local level through groups such as the Stoke Mandeville Patient Forum, and a national level through

the Specialised Healthcare Alliance, we influence services in SCI Centres and the wider community.

Through our membership of the Continuing Healthcare Alliance, Independent Living Strategy Group and the Care and Support Alliance, we work with numerous disability organisations to improve the provision of care to SCI people. One of the ways in which we do this is by sharing our expertise in the area of CHC with the members of these groups, increasing their understanding and spreading our key messages through their campaigning activities.

Maintaining our expertise

It is essential that the information we share with decision makers is up-to-date and accurate, enabling us to be both persuasive and credible in our dealings with government.

Following NHS Improvement's publication in 2018 of a Patient Safety Alert on safer bowel care for patients at risk of Autonomic Dysreflexia, we repeated our Freedom of Information requests to NHS Trusts. We wanted to find out how many NHS Trusts had changed their approach to bowel care for SCI patients following this instruction from NHS Improvement.

Our research showed that the number of Trusts with a policy has remained at 52%. This data enables us to return to NHS Improvement and demand more action on this crucial issue for SCI people. Of those with a policy, 55% have now adopted SIA's draft bowel care policy, which will hopefully improve the quality of care in those Trusts for our members.

We also exposed the extent to which SCI Centres were at the mercy of bed closures to meet the needs of winter pressures elsewhere in their host hospitals. Freedom of Information data showed that three SCI Centres lost over 400 bed days each during the winter of 2017/18, with two going on to lose over a thousand during the course of the year. We have shared this crucial information with civil servants, politicians and government ministers over the last year to raise this issue and demand an end to this worrying trend.

To amplify our voice and increase our engagement with politicians, we want our members to take an active role in our campaigns. We will do this through the development of new engagement strategies and producing resources, such as an online campaigning toolkit, to help and encourage our members to get involved.



A FORCE FOR CHANGE

Our achievements this year would not have been possible without a team that is passionate and committed to SIA's purpose, which is to be in partnership with the SCI community to create equality of life by campaigning, educating and supporting.

With 45% of our staff team having first-hand experience of SCI, we have the best insight possible into the daily challenges that face everyone affected by this condition. This valuable understanding helps maintain focus on our key strategic objectives and the individual and collective contributions needed to achieve them. We are a learning organisation with values that underpin the core of what we do and a culture that positively encourages innovation, creativity and continued personal and professional development. We recognise that our staff team is our biggest asset and, with continued investment, will provide us with much of the expertise needed to effect change in an impactful way and for the better. The team is to be commended for the many successes delivered throughout this year and now look forward to another exciting and equally challenging year ahead with a new CEO at the helm.

Our valued volunteers

Support received from volunteers during 2018/19 has been magnificent, with 4,631 hours being contributed in total – an increase of 6% on the previous year.

SIA is heavily reliant on this support and the various ways that this helps us achieve our goals. Each volunteer offers skillsets that we are able to employ across various areas of our work and we are enormously grateful to all of them for their commitment and for their contributions. We were pleased to welcome 127 new volunteers to the Charity this year, each of whom has assisted with fundraising, supporting newly injured people, contributing articles to our FORWARD magazine or providing back-office support. In total, we were supported by 200 volunteers this year.

With 45% of our staff team having first-hand experience of SCI, we have the best insight possible into the daily challenges that face everyone affected by this condition.

It's important to us that the benefits of volunteering are not all one-way and that our volunteers take something from their experience. Regular feedback is crucial to ensuring this and below are examples received from those currently volunteering with us:

- *"Thank you for taking me on, volunteering for SIA definitely gives me a purpose in life."* Charmaine, office volunteer
- *"Thank you for giving me a chance with this volunteering role. It's wonderful to be able to think for myself. It's the best volunteering role I have had in the seven years since my injury."* Ken, office volunteer
- *"The support and the time that SIA has put into me is why I love being an SIA volunteer. It is because of this that I have the knowledge, skills and confidence to do my job, a job that I love to do! The best job I've ever had."* William, Peer Support Volunteer, Devon
- *"It is both a privilege and a responsibility to be an SIA Peer Support Volunteer. When I meet people who have recently sustained an SCI, I am reminded of my own experience, which is why I believe it is important to show them that you can still lead a happy and fulfilled life despite everything that has happened. To that end, I just try to be myself, while making sure that they feel they can talk to me about their situation. It's certainly some of the most rewarding work I've ever undertaken."* Will, Peer Support Volunteer, London
- *"I felt so proud volunteering for SIA at the Cornflower Ball, what an event it was!"* Rachel, event volunteer

We extend thanks to all our volunteers for the wonderful work that they do on our behalf and for their continued involvement in the year ahead.

REACHING NEW AUDIENCES

This year we've grown our brand, furthered our reach and executed groundbreaking advertising. We've not only raised awareness of the Charity, but we've shown the public how they can get involved and significantly improve the lives of SCI people.

We continue to place the day-to-day experiences of SCI people at the heart of everything we say about the Charity. Our brand is authentic, clear and compelling. We express this across all of our channels – digital, print and face-to-face, and show how we work to make a fulfilled life for every SCI person a reality.

This year, 81,101 people visited our website – spinal.co.uk – which is an increase of 14% on the previous year. It's used by a growing number of people – those living with injury, their families and friends as well as healthcare professionals – as a go-to source of SCI information.

The website also plays a critical role in highlighting fundraising opportunities and the benefits of becoming an SIA member. We continuously improve the website with a special focus on making information easily available for all audiences.

Our social media presence is a remarkably effective tool in showcasing our vision of a fulfilled life for everyone affected by SCI. Our Twitter followers grew by 10% to nearly 16,000, while our followers on Facebook grew by 28% to over 7,700. In total, there were nearly four million opportunities to see our stories and messages across our social media channels during the year. Stories of fundraising successes that demonstrate the generosity of our many supporters, as well as how to access our services, are particularly effective and impactful.

Giving our members a platform to share their stories

Our bi-monthly FORWARD magazine plays an essential role in informing the SCI community on issues that matter most including health and wellbeing, ageing, daily living, employment, relationships, sport, travel and much more. We are



delighted that more and more members are submitting articles for publication and strong editorial and production standards ensure those compelling stories are seen by an ever-increasing number of readers.

Throughout the year, leading London agency Engine Group has generously donated its expertise to review how we promote our work and support our members. We are very grateful for their support, part of which was to enter a nationwide advertising competition. Our entry – Donate to Accelerate – came third in the charity sector category against very stiff competition and we won £50,000 of free outdoor digital advertising.

Using groundbreaking technology, our advert was a world first. SIA took over digital screens throughout the centre of Manchester in March 2019, and passers-by were able to see in real time how their donations accelerate an SCI person's rehabilitation. The primary purpose of this pioneering exercise was awareness raising, yet, despite the low footfall due to the awful weather, we received more than £250 in donations from people who

had no affiliation with SCI. The advertising displays showed members of the public how life changing the right support can be, and provided a quick and easy way for them to contribute financially to the Charity's work. The event gained strong media coverage, including a report on ITV's Granada News, which is watched by hundreds of thousands of people. We look forward to creating more innovative opportunities like this in the future.

This year, 81,101 people visited our website – www.spinal.co.uk – which is an increase of 14% on the previous year. It's used by a growing number of people – those living with injury, their families and friends as well as healthcare professionals.



THE LIFEBLOOD OF OUR ORGANISATION

We want people and organisations who share our vision of a fulfilled life for everyone affected by SCI to know that their support of SIA is making that a reality. We achieve this by placing the day-to-day experiences of SCI people at the heart of our fundraising. By doing so, our supporters – 210 fundraisers, over 1,000 donors, 111 Trusts and 115 companies – can be confident that their generosity has helped transform the lives of our 11,000-plus members. We thank everyone who has supported our work throughout the year.

Regular giving

It's important that we regularly remind our supporters that our life-changing work only happens due to their generosity. This year, we received over £23,000 in regular giving, which includes payments received via direct debit and payroll giving.

Legacy income

We are truly honoured and privileged to receive gifts in Wills from people who have supported us throughout their lives. Their generosity safeguards the future of the Charity and allow us to make longer-term plans to address the support needs of all those affected by SCI, as well as much-needed investments in our infrastructure. This year, we received an incredible £152,922, which included a wonderful gift from the late John Robertson.

Community and challenge events

More and more people are willing to support SCI people by taking part in an event or organising their own. The tireless fundraising efforts of the 23 people who took on this year's London Marathon raised a record £73,864. We were also thankful to Ben Tansley (SCI himself) and his friend Josh Patterson – star of TV reality show *Made in Chelsea* – who raised over £13,000 by completing the Berlin Marathon in everyday manual chairs. For those with an even more adventurous streak, our first ever SIA Skydive Day saw 21 people leap from the skies above Northamptonshire to raise £21,331 for the Charity.



Support from Trusts and Foundations

Trusts and Foundations have again been very generous in supporting SCI people to lead fulfilled lives. All of our services – Peer Support, SCI Nurse Specialists, Public Affairs and the Advice Line – have benefitted from the support of 111 Trusts and Foundations this year.



Corporate support

Our revised Corporate Membership Scheme has once again encouraged over 80 companies to demonstrate their support. Employees of our corporate supporters have parachuted, run, jogged, walked, baked, cycled and swum in a bid to fundraise and raise awareness of SIA. One of our most memorable events this year was the Annual Cornflower Ball – a well-established highlight of the legal calendar that this year raised a record amount of £75,000. ROKit Williams Racing, led by Sir Frank Williams – who has an SCI himself – and Claire Williams OBE, Deputy Team Principal and SIA Vice-President, have again been very generous in their support.

This year, we received an incredible £152,922 in legacy income, which included a wonderful gift from the late John Robertson.



STRUCTURE, GOVERNANCE AND MANAGEMENT

SIA supports not only spinal cord injured people, but also the many families and friends who have to adjust to their loved-one's life-changing injury.

The Trustees present their report and the financial statements of the Charity for the year ended 31st March 2019.

Directors and Trustees

The Directors of the charitable company (the Charity) are its Trustees for the purpose of charity law and throughout this report are collectively referred to as the Governing Council. The following served as Trustees and Board Directors for the Charity during the year:

Elected and co-opted Trustees:

- * Paul Davies MBE
- * Christa Dyson – Co-opted 1/12/18
- * Dr. Rupert Earl
- * Jonathan Fogerty – Appointed 1/12/18
- * Alison France – Co-opted 1/12/18
- * Peter Hamilton
- Dr Ram Hariharan – Co-opted 1/12/18
- * Michelle Howard
- * Darren Hughes
- * Faisal Hussain
- * Marcus Rhodes
- * Mark Ridler – Appointed 1/12/18
- * Raquel Siganporia

Retired/resigned Trustees:

- * Andrew Davies – Co-opted member, retired 1/12/18
- * Peggy Deane – Retired 1/12/18
- * Alison Denton Lyon – Retired 1/12/18
- Dr. Kidangalil Mathew – Co-opted, retired 1/12/18
- Martin Pollard – Co-opted, retired 1/12/18
- * Dr. Barbara Todd – Co-opted, retired 1/12/18

*Denotes spinal cord injured Trustee

Objectives and activities of the Charity

1. The provision of quality services, publications, information and support to all SCI people, their families and friends from the moment of injury onwards.
2. Encouraging SCI people to take up membership of SIA, so we may actively pursue their needs and concerns.

3. Promoting and carrying out medical and social research into all aspects of SCI (or assisting with this) and supporting and collaborating with other professionals working in the field.

4. Promoting and carrying out or assisting in promoting and carrying out research into, and development of equipment that will improve the quality of life for spinal cord injured people, their families and friends.

5. Raising awareness and understanding of paraplegia and tetraplegia, its causes, physical and social consequences, and seeking a reduction in paralysis due to SCI.

6. Establishing the right of access for every SCI person to specialised medical expertise and ongoing support from a recognised NHS SCI Centre.

7. Promoting and organising cooperation in the achievement of SIA's Objects locally, nationally and internationally. This could be achieved by bringing together in conference representatives of voluntary agencies, government departments, statutory authorities, other bodies, whether incorporated or not, and individuals engaged in the furtherance of the Objects.

8. Collecting and publishing information regarding the welfare of SCI people and the prevention of SCI; and exchanging such information with other bodies with similar objects, wherever they may be based.

Public benefit

In reviewing SIA's aims and objectives, and planning future activities, the Trustees have complied with the Charity Commission's general guidance on public benefit as demonstrated throughout this Trustees' report.

Membership

SIA offers the following membership options:

1. Full members (SCI people)
2. Junior members (SCI people)
3. Associate members
4. Honorary members
5. Affiliated members
6. Overseas members

Our Articles of Association provide for a limitation of full member liability to not exceeding £1.

We are very fortunate to enjoy and benefit from a close relationship with our members. We adhere to our founding principle that SIA is a charity that is led by the needs and aspirations of people with disabilities. Our members are critical to our work and we consult with all of them on the key issues for SIA. Members regularly contribute to our online surveys and discussions, and they make sure that we hear and are clear on their views.

Other than corporate membership packages, SIA membership is free, with a small subscription payable if members opt to receive our bi-monthly magazine, FORWARD. During the year covered by this report, 846 people joined as new members, bringing the total number of SIA members to 11,310 (2018: 10,464).

Appointment of Directors and Trustees

In any Governance year, SIA may have between a minimum of nine and a maximum of 15 Trustees, all of whom are members of SIA's Governing Council. Of these, no more than nine are elected by full members of SIA. Trustees are elected for a renewable term of three years and are also the Directors of the charitable company for the purposes of the Companies Act 2006.

Only full members are eligible to stand for election as Trustees. Consequently, all of the elected Trustees on our Governing Council have an SCI. Since only full members are eligible to vote in Trustee elections, the electorate is also made up of SCI people.

Any full member may nominate either themselves or other full members willing to serve as Trustees.

Every year one-third of the elected Trustees retire by rotation. If the number of nominations received exceeds the places available, an election takes place by postal and electronic ballot prior to the Association's AGM. Notification of appointments and/or ballot results takes place at SIA's AGM.

Every effort is made to ensure that the make-up of the Governing Council reflects SIA's membership in terms of level of injury, age, gender and ethnicity. If a particular section of the membership is underrepresented, we actively encourage members from this section to stand for election.

We have a good mix of skills on our Governing Council. However, if the Board loses particular skills due to retirements, members with the appropriate skills sets are approached. Trustees undertake a full evaluation of the existing skills, knowledge and experience on the Governing Council annually.

In addition to elected Trustees, the Governing Council may co-opt up to six Trustees. Co-opted Trustees are appointed to serve for a renewable term of one year and can only be co-opted with the support of the serving Trustees. They are selected on the basis of their skills (and the skills required by the Governing Council).

SIA's Honorary Officers, appointed annually by Governing Council comprise its Chair, two Vice Chairs and an Honorary Treasurer. These posts are held for a maximum of three consecutive years, but in exceptional circumstances (e.g. in the absence of nominees), the current Chair or Vice Chairs may serve for a further year.

Trustee induction and training

We are fortunate in having some Trustees whose length of service on the Governing Council means that they are able to pass on their knowledge and experience of SIA to newly elected and co-opted Trustees. Before new Trustees attend their first Governing Council meeting, they will attend an induction day at SIA's office in Milton Keynes and are provided with a comprehensive induction and resource pack. They are briefed on their legal obligations under charity and company law, on SIA's governing documents, on the committee structure and decision-making processes, SIA services, the strategic, business and fundraising plans, and the recent financial performance of the Charity. They will also have the chance to meet other Trustees and SIA employees. All our Trustees are encouraged to attend appropriate external training events where these will facilitate their role and fill a skills shortage as identified by the annual skills audit.

Governance and Trustees' responsibilities

The Trustees have the ultimate responsibility for running the Charity with their principal duties being to set the strategic direction of the Charity and ensure that SIA is solvent, properly run and delivers its charitable purposes. Company and charity law requires the Trustees as Directors to prepare financial statements for each financial year, which give a true and fair view of the state of affairs of the charitable company and its financial activities for that period. In preparing those financial statements, the Trustees have:

- Selected suitable accounting policies and then applied them consistently;
- Made judgements and estimates that are reasonable and prudent;
- Stated whether applicable accounting standards have been followed, subject to any material departures disclosed and explained in the financial statements; and

- Prepared the financial statements on the going concern basis.

The Trustees are responsible for maintaining adequate accounting records that disclose with reasonable accuracy at any time the financial position of the charitable company and enable them to ensure that the financial statements comply with the Charities Act 2011 and Companies Act 2006. They are also responsible for safeguarding the assets of the Charity and hence for taking reasonable steps for the prevention and detection of fraud and other irregularities.

Trustees have discharged these responsibilities by implementing a system of financial controls based upon:

- Agreeing a budget for SIA and delegating responsibility for the control of the budget; and
- Monitoring the implementation of the budget by receiving monthly and quarterly reports.

The Governing Council meets quarterly and has delegated certain tasks to directly accountable sub-committees; the Governance Group and Audit & Assurance Subcommittee. They have delegated authority to deal with matters pertaining to development, human resources, financial matters and risk management. Membership of the Governance Group comprises the Chair, Vice Chairs and Honorary Treasurer. Each subcommittee meets as required and all meetings are attended by SIA's Chief Executive Officer (CEO).

During 2018/19, the following specialist working groups existed to look at specific areas of SIA's work and comprised a mix of Trustees, senior members of staff and external consultants.

- NHS Continuing Healthcare and Social Care Working Group (to look at the specific issues affecting SIA members in relation to care provision);

STRUCTURE, GOVERNANCE AND MANAGEMENT (continued)

Our shared values of respect, integrity and inclusiveness describe the culture we aim to foster in the workplace, as is an environment where creativity and innovation is encouraged.

- Directory Panel (to advise on matters concerning SIA's Directories of Personal Injury Solicitors, Barristers, Case Managers and Independent Financial Advisers);
- Charity Governance Code Working Group (to benchmark SIA's policies and procedures against the good practice detailed in the Charities Governance Code and make recommendations for future developments);
- Strike a Cord Campaign Group;
- NHS Continuing Healthcare Campaign Group (both campaign groups were set up to progress specific SIA national campaigns); and
- Chief Executive Officer Recruitment Panel.

In addition to these Working Groups, one Trustee takes a lead in an assurance role for SIA's fundraising strategy, business development and performance against objectives.

The Terms of Reference for all of SIA's working groups are reviewed annually by the Audit & Assurance Subcommittee.

Trustees appoint a CEO to manage the day-to-day operations of the Charity. To facilitate effective operations the CEO has delegated authority, within terms of delegation approved by the Trustees, for all operational matters including finance, employment, service delivery and income generation. In 2018, Trustees undertook a robust recruitment process to replace SIA's previous CEO, Sue Browning. Nik Hartley OBE, former CEO of Restless Development, was appointed to the post and joined the Charity in January 2019.

Connected company

The company owns the whole of the issued share capital of a trading company, SIA Enterprises (SIAE) Limited. The company is registered in England and Wales (No. 6034183). SIAE Ltd has contracts with Bullen Healthcare Ltd, which provides a home delivery service for continence and pharmaceutical products to SIA members, branded as SIA Healthcare. 2018/19 was SIA Healthcare's fifth year of operation and 295 people signed up to SIA Healthcare, bringing the total number of registered service users to 2,795 as of 31 March 2019.

In March 2018, SIA signed contracts with Bush & Company Rehabilitation Ltd to provide a specialist case management service for SCI people with a personal injury claim, branded as SIA Case Management. 2018/19 was SIA Case Management's first year of operation.

Pay policy for senior staff

Salaries for all staff are benchmarked against salary statistics supplied by Croner Reward, a leading provider of industry-specific pay and benefits data in the UK. This information is updated by Croner Reward annually and is used to form the basis of SIA's pay structure for all roles, including those of senior staff, with salaries paid falling within the lower to medium end of the pay band for each role. Trustees review staff remuneration annually.

FINANCIAL REVIEW

Risk management

Over the last year, Trustees have examined the major strategic, business and operational risks that the Charity faces and confirm that systems are in place to enable the necessary steps to be taken to reduce these risks. SIA has an established risk register, and systems and procedures in place to mitigate risks. We use recognised risk management protocols and standards when assessing financial, operational, regulatory, external and strategic risks.

SIA's Audit & Assurance Subcommittee, which meets five times per year, is responsible for oversight of the risk management framework and regularly reviews the risk register. SIA's Staff Leadership Team reviews and discusses the risk register quarterly and is responsible for managing key risks and identifying and implementing effective measures to ensure mitigation.

Trustees focus on the resilience of whole systems through 'risk aggregation' and there is regular discussion on whether the level of risk is acceptable or if additional actions are required to reduce it. Regular review of the risk management register informs our strategic planning process and is an integral part of our assurance framework.

Investment policy

The Charity has not held any investments during the current financial year.

Trustees agreed an internal process whereby annually they consider the strategic position with regard to cash balances and risk, and any restrictions to be placed upon investments held at that time. SIA's Audit & Assurance Subcommittee monitors the position regularly throughout the year.

During the year, cash was held in current and deposit accounts.

Reserves policy

SIA's Reserves Policy, including agreed reserve levels, is reviewed by Trustees annually as part of governance processes and takes into consideration the Charity's strategic plans and the forthcoming budget.

The Reserves Policy recognises the importance of holding sufficient reserves to be able to continue providing services to its beneficiaries without them suffering any immediate loss of service in the event of a material reduction in SIA's income. Trustees concluded that six to nine months of free reserve funds should be held.

The reserves are held as follows:

Unrestricted general reserves	£816,715
Designated reserves	£8,241
Total Free reserves	£824,956

Trustees are satisfied that the Free Reserves level of £824,956 (2017/2018: £942,598) falls within the parameters of the reserves policy.

Unrestricted funds in this context represent General and Designated Funds held, but excluding Property and Fixed Assets Funds held for the purposes of covering future depreciation charges of these assets. Other funds held at this date were Restricted Funds of £128,506 (2018: £41,100) and the Property and Asset Funds of £1,617,569 (2018: £1,647,726).

Trustees continue to ensure that SIA's Reserves Policy is kept under review and the Audit and Assurance Committee has oversight responsibility for this area.

Trustees activities

Key aspects of Trustee activity this year included:

- The recruitment of a new Chief Executive Officer who took up post in January 2019;
- Overseeing work to progress the establishment of SIA Case Management, which will provide a new sustainable income stream for the Charity;

- An overall review of the available skills mix offered by current Trustees and identification of their specific training needs;
- One-to-one reviews to help ensure each Trustee continues to be supported in his/her role, and to help ensure identified training needs are addressed;
- Continuing to lead on the progression of recommendations submitted by SIA in respect of the NHS review of SCI specialist services; and
- Maintaining best practice in accordance with the Charities Governance Code.

Statement as to disclosure to our auditor

In so far as the Trustees are aware at the time of approving our Trustees' annual report:

- there is no relevant information, being information needed by the auditor in connection with preparing their report, of which the Charity's auditor is unaware, and
- the Trustees, having made enquiries of fellow directors and the Charity's auditor, have each taken all steps that he/she is obliged to take as a director in order to make themselves aware of any relevant audit information and to establish that the auditor is aware of that information.

Legislative and regulatory compliance

In 2017/18, we undertook reviews of all of our relevant policies and delivered a programme of staff training to ensure SIA's compliance with the General Data Protection Regulations (GDPR) by the time they became UK law in May 2018.

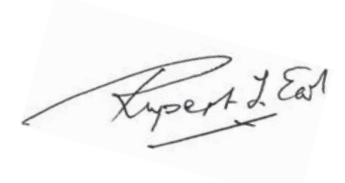
Trustees receive regular reports in relation to our compliance with new and existing legislation ensuring that standards and compliance are maintained at Governance and operational level.

Charity Governance Code

The current Charity Governance Code was published during 2017. Throughout the year, we benchmarked our current policies, procedures and activities against the recommendations and statements of good practice it contains.

Whilst we already apply many of the recommendations and much of the good practice measures in the code, we continue to monitor application at both Governance and operational level.

Signed on behalf of the Trustees on 7 September 2019.



Dr Rupert Earl
Chair and Company Director

INDEPENDENT AUDITOR'S REPORT

Legal and administration

Company secretary

Sue Browning, Chief Executive Officer
(to 28/8/2018)

Nik Hartley OBE, Chief Executive Officer
(from 3/1/2019)

Registered office

SIA House
2 Trueman Place
Oldbrook
Milton Keynes MK6 2HH

Auditors

Keens Shay Keens MK LLP
230 Upper Fifth Street
Milton Keynes MK9 2HR

Bankers

Barclays Bank Plc
Muswell Hill
London N10 1DD

Patron

HRH The Princess Royal

President

Baroness Masham of Ilton

Vice-Presidents

Claire Williams OBE
Lady Gillian Howard de Walden
Paul Roy
Gerard McDermott QC

Legal status

Spinal Injuries Association (SIA) was founded in 1974 as a registered charity (No. 1054097). The company was incorporated as a Charitable Company (No. 3175203) limited by guarantee on 19 March 1996 and is registered in England and Wales. The governing instrument for the charitable company is the Memorandum and Articles of Association updated May 2017.

Opinion

We audited the financial statements of the Spinal Injuries Association (the 'Charity') and its subsidiary for the year ended 31 March 2019, which comprise the Consolidated Statement of Financial Activities, the Consolidated Balance Sheet, the Consolidated Statement of Cash Flows and the notes to the financial

statements, including a summary of significant accounting policies. The financial reporting framework that has been applied in their preparation is applicable law and United Kingdom Accounting Standards, including Financial Reporting Standard 102, The Financial Reporting Standard applicable in the UK and Republic of Ireland (United Kingdom Generally Accepted Accounting Practice).

In our opinion, the financial statements:

- give a true and fair view of the state of the group and parent charitable company's affairs as at 31 March 2019 and of the group's incoming resources and application of resources, for the year then ended;
- have been properly prepared in accordance with United Kingdom Generally Accepted Accounting Practice; and
- have been prepared in accordance with the requirements of the Companies Act 2006.

Basis for opinion

We conducted our audit in accordance with International Standards on Auditing (UK) (ISAs (UK)) and applicable law. Our responsibilities under those standards are further described in the Auditor's responsibilities for the audit of the accounts section of our report. We are independent of the Charity in accordance with the ethical requirements that are relevant to our audit of the accounts in the UK, including the FRC's Ethical Standard, and we have fulfilled our other ethical responsibilities in accordance with these requirements. We believe that the audit evidence we have obtained is sufficient and appropriate to provide a basis for our opinion.

Conclusions relating to going concern

We have nothing to report in respect of the following matters in relation to which the ISAs (UK) require us to report to you where:

- the Trustees' use of the going concern basis of accounting in the preparation of the financial statements is not appropriate; or
- the Trustees have not disclosed in the financial statements any identified material uncertainties that may cast significant doubt about the Charity's ability to continue to adopt the going concern basis of accounting for a period of at least twelve months from the date when the financial statements are authorised for issue.

Other information

The other information comprises the information included in the annual report, other than the financial statements and our auditor's report thereon. The Trustees are responsible for the other information. Our opinion on the financial statements does not cover the other information and we do not express any form of assurance conclusion thereon.

In connection with our audit of the financial statements, our responsibility is to read the other information and, in doing so, consider whether the other information is materially inconsistent with the financial statements or our knowledge obtained in the audit or otherwise appears to be materially misstated. If we identify such material inconsistencies or apparent material misstatements, we are required to determine whether there is a material misstatement in the financial statements or a material misstatement of the other information. If, based on the work we have performed, we conclude that there is a material misstatement of this other information, we are required to report that fact.

We have nothing to report in this regard.

The SIA staff team comprises individuals with a mix of skills who are passionate about what they do and work hard to ensure that the SIA brand remains synonymous with excellence.

Matters on which we are required to report by exception

We have nothing to report in respect of the following matters in relation to which the Charities (Accounts and Reports) Regulations 2008 require us to report to you if, in our opinion:

- the information given in the financial statements is inconsistent in any material respect with the Trustees' Report; or
- sufficient accounting records have not been kept; or
- the financial statements are not in agreement with the accounting records; or
- we have not received all the information and explanations we require for our audit.

Responsibilities of Trustees

As explained more fully in the Statement of Trustees' Responsibilities, the Trustees, who are also the Directors of the Charity for the purpose of company law, are responsible for the preparation of the financial statements and for being satisfied that they give a true and fair view, and for such internal control as the Directors determine is necessary to enable the preparation of financial statements that are free from material misstatement, whether due to fraud or error.

In preparing the financial statements, the Trustees are responsible for assessing the Charity's ability to continue as a going concern, disclosing, as applicable, matters related to going concern and using the going concern basis of accounting unless the Trustees either intend to liquidate the company or to cease operations, or have no realistic alternative but to do so.

Auditor's responsibilities for the audit of the financial statements

We were appointed as auditors under section 144 of the Charities Act 2011 and report in accordance with the Act and relevant regulations made or having effect thereunder.

Our objectives are to obtain reasonable assurance about whether the financial statements as a whole are free from material misstatement, whether due to fraud or error, and to issue an auditor's report that includes our opinion. Reasonable assurance is a high level of assurance but is not a guarantee that an audit conducted in accordance with ISAs (UK) will always detect a material misstatement when it exists. Misstatements can arise from fraud or error and are considered material if, individually or in the aggregate, they could reasonably be expected to influence the economic decisions of users taken on the basis of these financial statements.

A further description of our responsibilities for the audit of the financial statements is located on the Financial Reporting Council's website at: <http://www.frc.org.uk/auditorsresponsibilities>. This description forms part of our auditor's report.

This report is made solely to the Charity's Trustees, as a body, in accordance with part 4 of the Charities (Accounts and Reports) Regulations 2008. Our audit work was undertaken so that we might state to the Charity's Trustees those matters we are required to state to them in an auditor's report and for no other purpose. To the fullest extent permitted by law, we do not accept or assume responsibility to anyone other than the Charity and the Charity's Trustees as a body, for our audit work, for this report, or for the opinions we have formed.



Simon Gill FCCA (Senior Statutory Auditor)

for and on behalf of
Keens Shay Keens MK LLP
Chartered Accountants
Sovereign Court
230 Upper Fifth Street
Central Milton Keynes MK9 2HR

Date: 7 September 2019

Spinal Injuries Association

(A Company Limited by Guarantee) Company Number: 3175203

Consolidated statement of financial activities including the income and expenditure account for the year ended 31 March 2019

	Notes	Unrestricted Funds £	Designated Funds £	Restricted Funds £	Total Funds 2019 £	Total Funds 2018 £
Income						
Voluntary income:						
Grants and donations	2	758,422	448	337,425	1,096,295	670,320
Legacies		151,922	1,000	-	152,922	66,649
Activities for generating funds:	3					
Fundraising activities		249,348	5,238	-	254,586	883,641
Other trading activities		361,778	-	-	361,778	212,292
		611,126	5,238	-	616,364	1,095,933
Investment income	4	4,601	-	-	4,601	2,909
Charitable activities:						
Publications and training	3	200,938	-	-	200,938	155,526
Other charitable activities		58,187	-	-	58,187	-
		259,125	-	-	259,125	155,526
Total income		1,785,196	6,686	337,425	2,129,307	1,991,337
Expenditure						
Raising funds:						
Fundraising costs of grants and donations	6	276,030	-	-	276,030	268,391
Fundraising activities		271,428	5,559	-	276,987	314,567
Trading activities		32,094	-	-	32,094	10,606
Sub total cost of raising funds		579,552	5,559	-	585,111	593,564
Charitable activities:						
Services, Publication and Social Policy	6	1,046,658	69,881	250,019	1,366,558	1,318,101
Awareness raising		193,608	-	-	193,608	190,658
Sub total charitable activities		1,240,266	69,881	250,019	1,560,166	1,508,759
Other costs	7	4,755	39,668	-	44,423	191,895
Total expenditure		1,824,573	115,108	250,019	2,189,700	2,294,218
Net (outgoing) income before transfers		(39,377)	(108,422)	87,406	(60,393)	(302,881)
Gross transfers between funds	19	204,576	(204,576)	-	-	-
Net movement of funds in year	19, 20	165,199	(312,998)	87,406	(60,393)	(302,881)
Total funds as at 6 April brought forward		651,516	1,938,808	41,100	2,631,424	2,934,305
Total funds as at 31 March carried forward		816,715	1,625,810	128,506	2,571,031	2,631,424

For 2019, there has been an update to the SOFA headings under which certain income/costs are analysed, which will be maintained in future years. This analysis is different to that adopted in 2018 and before, but reflecting no changes to the 2018 result or funds and the impracticality of restating the 2018 accounts, the 2018 analysis has been retained as previously disclosed. Legacies and Investment income are not affected.

The charitable group has no recognised gains or losses other than the results for the year as set out above. All of the activities of the charitable group are classed as continuing except where indicated otherwise. The notes on pages 30 to 41 form an integral part of the accounts.

Spinal Injuries Association

(A Company Limited by Guarantee) Company Number: 3175203

Consolidated statement of financial position as at 31 March 2019

	Notes	2019 £	2018 £
FIXED ASSETS			
Tangible assets	11	1,608,058	1,647,726
Intangible assets	12	9,511	-
		1,617,569	1,647,726
CURRENT ASSETS			
Stock		24,625	-
Debtors	15	324,935	391,777
Short term deposits		425,000	450,940
Cash at bank and in hand		346,969	358,668
		1,121,529	1,201,385
CURRENT LIABILITIES			
CREDITORS: amounts falling due within one year	17	(168,067)	(217,687)
NET CURRENT ASSETS		953,462	983,698
TOTAL ASSETS LESS LIABILITIES		2,571,031	2,631,424
Represented by			
Funds			
Unrestricted	19	816,715	651,516
Designated	19		
Property and fixed assets fund		1,617,569	1,647,726
Other designated		8,241	291,082
		1,625,810	1,938,808
Restricted	20	128,506	41,100
Total funds		2,571,031	2,631,424

The financial statements on pages 26 to 41 were approved and authorised for issue by the Trustees on 7 September 2019 and signed on their behalf by:



Marcus Rhodes
Hon Treasurer

The notes on pages 30 to 41 form an integral part of the accounts.

Spinal Injuries Association

(A Company Limited by Guarantee) Company Number: 3175203

Company statement of financial position as at 31 March 2019

	Notes	2019		2018	
		£	£	£	£
FIXED ASSETS					
Tangible assets	11		1,608,058	1,647,726	
Intangible assets	12		9,511	-	
Investments	14		1	1	
			<u>1,617,570</u>	<u>1,647,727</u>	
CURRENT ASSETS					
Stock		24,625	-		
Debtors	16	397,758	367,192		
Short term deposits		425,000	450,941		
Cash at bank and in hand		255,108	346,751		
		<u>1,102,491</u>	<u>1,164,884</u>		
CURRENT LIABILITIES					
CREDITORS: amounts falling due within one year					
	18	(149,030)	(181,187)		
NET CURRENT ASSETS			<u>953,461</u>	<u>983,697</u>	
TOTAL ASSETS LESS LIABILITIES			<u>2,571,031</u>	<u>2,631,424</u>	
Represented by					
Funds					
Unrestricted	19		816,715	651,516	
Designated	19				
Property and fixed assets funds			1,617,569	1,647,726	
Other designated			8,241	291,082	
			<u>1,625,810</u>	<u>1,938,808</u>	
Restricted	20		128,506	41,100	
Total funds			<u>2,571,031</u>	<u>2,631,424</u>	

These accounts are prepared in accordance with the special provisions of Part 15 of the Companies Act 2006 relating to small entities. The financial statements on pages 26-41 were approved and authorised for issue by the Trustees on 7 September 2019 and signed on their behalf by:



Marcus Rhodes
Hon Treasurer

The notes on pages 30 to 41 form an integral part of the accounts.

Spinal Injuries Association

(A Company Limited by Guarantee) Company Number: 3175203

Consolidated cash flow statement as at 31 March 2019

	2019	2018
CASH FLOWS FROM OPERATING ACTIVITIES		
Net outgoing resources before transfers	(60,393)	(302,881)
Adjustments for:		
Depreciation of intangible fixed assets	4,755	-
Depreciation of tangible fixed assets	39,668	40,934
Investment income	(4,601)	(2,909)
Changes in:		
Decrease (increase) in stock	(24,625)	-
Decrease (increase) in trade and other debtors	66,842	138,165
Increase (decrease) in trade and other creditors	(49,620)	(13,487)
Cash generated from operations	<u>(27,974)</u>	<u>(140,178)</u>
Interest received	4,601	2,909
	<u>(23,373)</u>	<u>(137,269)</u>
CASH FLOWS FROM INVESTING ACTIVITIES		
Purchase of intangible assets	(14,266)	-
	<u>(14,266)</u>	<u>-</u>
NET DECREASE IN CASH AND CASH EQUIVALENTS	<u>(37,639)</u>	<u>(137,269)</u>
CASH AND CASH EQUIVALENTS AT BEGINNING OF YEAR	<u>809,608</u>	<u>946,877</u>
CASH AND CASH EQUIVALENTS AT END OF YEAR	<u>771,969</u>	<u>809,608</u>

Notes to the financial statements

for the year ended 31 March 2019

1. Accounting policies

a) Basis of accounting

The financial statements have been prepared in accordance with:

- Accounting and Reporting by Charities: Statement of Recommended Practice applicable to charities preparing their accounts in accordance with the Financial Reporting Standard applicable in the UK and Republic of Ireland (FRS 102) (Effective January 2015) – (Charities SORP (FRS102));
- the Financial Reporting Standard applicable in the UK and Republic of Ireland (FRS 102); and
- the Companies Act 2006.

b) Statement of cash flows

A consolidated statement of cash flows is included within these financial statements.

c) Donations and funds accounting

General funds are unrestricted funds available for use at the discretion of the Trustees in furtherance of the general activities of the Charity and which have not been designated for other purposes.

Designated funds comprise funds that have been set aside by the Trustees for specific purposes. The purpose and use of the designated funds is set out in the notes to the financial statements.

Restricted funds are funds subject to specific restriction imposed by donors or by the nature of the appeal. The purpose and use of the restricted funds is set out in the notes to the financial statements.

d) Income and grants

All income becoming available to the charitable company during the year is included when the amount is reasonably certain and there is certainty of receipt. Such income is only deferred when:

- The donor specifies that the grant or donation must only be used in future accounting periods;
- The donor has imposed conditions which must be met before the Charity has unconditional entitlement; or
- Grants are made for use to cover service provision in more than one financial year. In such circumstances the amount deferred is in relation to the level of activity to be carried out in the following year.

Earned income is deferred when:

- Ticket sales, entrance fees, sponsorship etc. are received in advance of a fundraising event/activity to which they relate.

Legacies are recognised at the earlier of the date of the Charity being notified of an impending distribution or the date of receipt of funds.

e) Volunteers and donated services

The value of services donated by volunteers is not incorporated into these financial statements. Where there are such services, further details can be found in the Trustees' report.

f) Expenditure

Expenditure is classified under the principal headings of Cost of Generating Funds and Charitable Expenditure rather than the type of expense in order to provide more useful information to the users of the accounts. Where costs cannot be correctly attributed they have been allocated to activities on a basis consistent with the use of resources.

Support costs comprise all services supplied centrally identified as wholly or mainly in support of charitable activities and include overheads, management and governance costs. Support costs are apportioned to charitable and fundraising activities on a percentage of staff numbers basis.

Costs of generating funds include the costs incurred in seeking grants and donations, the cost of holding events and fundraising trading activity. These costs are regarded as necessary to generate funds that are needed to finance charitable activities. Charitable activities expenditure enables the Charity to meet its charitable aims and objectives.

Joint Fundraising Activities

The Company occasionally receives fundraising income from certain fundraising events undertaken on a joint basis with other charities. Engagements with the other organisations may be either on a contractual basis or on an informal understanding that a share of funds raised will be remitted to the other organisations.

If there is a contractual relationship that directs the division of funds raised then only the Company's share of the revenues and costs are recognised, with the other party's share being recognised in their books separately.

However, if there is no contractual relationship, or the obligation is only a constructive one, the Company is considered to control the funds as principal. In this case all the funds raised are recognised in the Company's accounts and the outgoing resources are treated as expenditure on fundraising activities.

g) Fixed assets

Tangible fixed assets are stated at cost. Depreciation is calculated at appropriate annual rates estimated to write off the costs of fixed assets less their estimated residual value over their useful lives as follows:

Land **Not depreciated**

Leasehold buildings **50 years**

Office equipment **25% per annum on a straight line basis**

Computers **33.33% per annum on a straight line basis**

Tangible fixed assets costing less than £1,000 are not capitalised, and are written off in the year of purchase.

Intangible assets

Intangible assets consist of IT software.

Intangible assets are amortised at 33.33% per annum on a straight line basis.

h) Subsidiary

Investment in Subsidiary is valued at cost.

i) Taxation

Irrecoverable VAT is written off when the expenditure to which it relates to is incurred and is recorded as part of that expenditure. Tax credits, tax deducted from income and receipts under deed of covenant or gift aid are recorded on a receivable basis. They are recorded as part of the income to which they relate.

j) Pension scheme

The Charity provides a defined contribution money purchase pension scheme, the assets of which are held separately from those of the company in an independently administered fund. Contributions totalling £92,061 (2018: £90,550) were paid during the year.

k) Stock

Stock consists of items to be used by participants in challenge and community fundraising events during 2019/20 and in the future. Stock is stated at cost.

Notes to the financial statements

for the year ended 31 March 2019

2. Grants and donations

	Unrestricted Funds £	Designated Funds £	Restricted Funds £	Total Funds 2019 £	Total Funds 2018 £
Advocacy and case work	48,295	-	19,720	68,015	90,459
Publications	41,250	-	-	41,250	84,430
Social Policy work	35,000	-	10,000	45,000	94,525
Peer Support and Advice	148,821	448	302,883	452,152	400,007
Other grants and donations	485,056	-	4,822	489,878	899
Total grants and donations income	758,422	448	337,425	1,096,295	670,320

All trusts and organisations who have donated £5,000 or more are thanked and listed on page 42.

For 2019, there has been an update to the SOFA headings under which certain income/costs are analysed, which will be maintained in future years. This analysis is different to that adopted in 2018 and before, but reflecting no changes to the 2018 result or funds and the impracticality of restating the 2018 accounts, the 2018 analysis has been retained as previously disclosed. Some of the Other grants and donations were previously classed as Fundraising income.

3. Income from activities for generating funds and income from charitable activities

	Unrestricted Funds £	Designated Funds £	Restricted Funds £	Total Funds 2019 £	Total Funds 2018 £
Income from activities for generating funds					
Fundraising events	249,348	5,238	-	254,586	883,641
Corporate partnerships	355,065	-	-	355,065	204,520
Christmas cards	6,330	-	-	6,330	7,772
Other	383	-	-	383	-
Sub total	611,126	5,238	-	616,364	1,095,933
Income from charitable activities					
Education and Training	66,821	-	-	66,821	45,297
Publications	134,117	-	-	134,117	110,229
Other	58,187	-	-	58,187	-
Sub total	259,125	-	-	259,125	155,526

For 2019, there has been an update to the SOFA headings under which certain income/costs are analysed, which will be maintained in future years. This analysis is different to that adopted in 2018 and before, but reflecting no changes to the 2018 result or funds and the impracticality of restating the 2018 accounts, the 2018 analysis has been retained as previously disclosed. In this note, this applies to both Income from Activities for generating funds and Income from charitable activities.

4. Investment income

	Unrestricted Funds £	Designated Funds £	Restricted Funds £	Total Funds 2019 £	Total Funds 2018 £
Interest on cash deposit	4,601	-	-	4,601	2,909
	4,601	-	-	4,601	2,909

5. Deficit on charitable activities for the year

	2019 £	2018 £
The deficit is stated after charging:		
Depreciation of fixed assets	44,423	40,934
Audit fee	8,000	8,000
Non-audit fee	1,600	1,400

6. Cost of raising funds and cost of charitable activities

	Staff Costs £	Direct Costs £	Support Costs £	Total 2019 £
Cost of raising funds				
Fundraising costs of grants and donations	164,764	60,044	51,222	276,030
Fundraising activities	128,380	116,012	32,595	276,987
Trading activities	27,805	4,289	-	32,094
Fundraising activities	320,949	180,345	83,817	585,111
Cost of charitable activities				
Services and Publications				
Advocacy and casework	196,370	48,270	65,192	309,832
Publications	31,387	63,170	9,313	103,870
Social policy work	100,251	78,407	37,253	215,911
Peer support and advice	483,293	86,016	167,636	736,945
Sub total	811,301	275,863	279,394	1,366,558
Awareness Raising	106,982	58,685	27,941	193,608
Charitable activities	918,283	334,548	307,335	1,560,166

For 2019, there has been an update to the SOFA headings under which certain income/costs are analysed, which will be maintained in future years. This analysis is different to that adopted in 2018 and before, but reflecting no changes to the 2018 result or funds and the impracticality of restating the 2018 accounts, the 2018 analysis has been retained as previously disclosed. In this note, this applies to the allocation of Support costs. In 2018, the Support costs were shown as a separate item on the Statement of Financial Activities. In 2019, Support costs, excluding the depreciation, are apportioned to Fundraising and Charitable activities.

Notes to the financial statements

for the year ended 31 March 2019

7. Other costs

	Staff Costs £	Depreciation £	Direct Costs £	Support Costs £	Total 2019 £	Total 2018 £
Management and Administration	-	-	-	-	-	155,493
Governance	-	-	-	-	-	36,402
Depreciation	-	44,423	-	-	44,423	-
Total	-	44,423	-	-	44,423	191,895

For 2019, there has been an update to the SOFA headings under which certain income/costs are analysed, which will be maintained in future years. This analysis is different to that adopted in 2018 and before, but reflecting no changes to the 2018 result or funds and the impracticality of restating the 2018 accounts, the 2018 analysis has been retained as previously disclosed. In 2018, a proportion of the Support costs were shown as a separate item on the Statement of Financial Activities, under the 'Other' heading. In 2019, all Support costs, excluding the depreciation, are apportioned to Fundraising and Charitable activities.

The comparative 2019 Management and administration costs that would have been included in Other Costs based on the old presentation were £140,324 and Governance costs were £44,329.

Depreciation in 2018 which was included in Support Costs amounted to £40,934.

8. Direct costs

	2019 £	2018 £
The major components of direct costs were:		
Fundraising events	154,208	228,751
Printing and photocopying	97,253	112,436
Consultancy and Contractors	85,185	103,206
Travel and accommodation	100,204	106,443
Volunteer costs	4,373	4,475
Postage and telecommunications	18,917	20,483
Other	54,753	35,799
	514,893	611,593

9. Support costs

	Raising Funds £	Advocacy & casework £	Publications £	Social policy work £	Peer support & advice £	Awareness £	Total 2019 £	Total 2018 £
Management and Administration	74,319	57,804	8,258	33,031	148,638	24,772	346,822	384,360
Governance	9,499	7,388	1,055	4,222	18,999	3,166	44,329	36,402
Total	83,818	65,192	9,313	37,253	167,637	27,938	391,151	420,762

Support costs are allocated on a staff number basis.

10. Analysis of staff costs, trustee remuneration and expenses, and the cost of key personnel

	2019 £	2018 £
The aggregate payroll costs were:		
Wages and salaries	1,240,511	1,243,128
Social security costs	112,841	114,189
Other pension costs	92,061	90,550
Total	1,445,413	1,447,867

Particulars of employees:

The average number of equivalent full time staff employed by the charitable company during the financial year amounted to 39 (2018: 40). The key senior staff are the Chief Executive Officer, the Director of Fundraising & Marketing and the Director of Services & Operations. The total employee benefits of the key senior staff were £172,677 (2018: £214,098).

The following number of staff received emoluments (employee benefits excluding pension costs) in excess of £60,000 (excluding employer pension costs):

	2019 No.	2018 No.
£60,001 - £70,000	1	-
£70,001 - £80,000	1	1

In respect of staff who received emoluments in excess of £60,000, the following employer contributions were paid into a defined contribution pension scheme:

	2019 £	2018 £
	£8,781	£11,614

No Trustee received any remuneration. During the financial year, expenses were paid to 14 Trustees, amounting to £8,709 (2018: 11 Trustees amounting to £5,534).

11. Tangible fixed assets – group and charitable company

	Capital Buildings £	Computers £	Office Equipment £	Total £
COST				
At 6 April 2018	2,163,410	6,461	29,449	2,199,320
At 31 March 2019	2,163,410	6,461	29,449	2,199,320
DEPRECIATION				
At 6 April 2018	515,684	6,461	29,449	551,594
Charge for the year	39,668	-	-	39,668
At 31 March 2019	555,352	6,461	29,449	591,262
NET BOOK VALUE				
At 31 March 2019	1,608,058	-	-	1,608,058
At 5 April 2018	1,647,726	-	-	1,647,726

Capital Buildings includes the cost of a 125-year lease with MK Community Properties Ltd for the SIA House site.

Notes to the financial statements

for the year ended 31 March 2019

12. Intangible fixed assets – group and charitable company

	IT Systems £	Total £
COST		
At 6 April 2018	-	-
Additions	14,266	14,266
At 31 March 2019	14,266	14,266
AMORTISATION		
At 6 April 2018	-	-
Charge for the year	4,755	4,755
At 31 March 2019	4,755	4,755
NET BOOK VALUE		
At 31 March 2019	9,511	9,511
At 5 April 2018	-	-

13. Financial commitments – group

	2019 Other £	2018 Other £
At the reporting end date the Charity had outstanding commitments for future minimum lease payments under non-cancellable operating leases, which fall due as follows:		
In one year or less	3,652	786
Between two and five years	8,092	3,143
Over five years	-	589
Cost	11,744	4,518

14. Fixed assets investments – charitable company

	2019 £	2018 £
Listed and Unlisted Investments		
Investment in subsidiary undertaking at cost	1	1
Total	1	1
Cost	1	1

Investment in subsidiary undertakings comprises the whole of the issued share capital of SIA Enterprises Ltd (£1), a company registered in England and Wales. SIA Enterprises Ltd has received £315,024 income in the year ended 31 March 2019 (2018: £204,721). The reserves of SIA Enterprises at year end were £nil.

	Unrestricted Funds £	Total Funds £
Analysis of investments between funds		
Investment in subsidiary	1	1
	1	1

15. Debtors – group

	2019 £	2018 £
Debtors	115,887	258,585
Prepayments and accrued income	209,048	133,192
Total	324,935	391,777

16. Debtors – charitable company

	2019 £	2018 £
Debtors	51,292	162,585
Amounts due from subsidiary undertaking	177,822	83,415
Prepayments and accrued income	168,644	121,192
Total	397,758	367,192

Notes to the financial statements

for the year ended 31 March 2019

17. Creditors: amounts falling due within one year – group

	2019 £	2018 £
VAT payable	28,726	56,548
PAYE	40,474	32,401
Pension payable	10,309	8,853
Accruals and deferred income	88,558	119,885
Total	168,067	217,687

Deferred income represents advertising, fundraising events ticket sales, challenge event fees and study days income received for events held after the year end.

18. Creditors: amounts falling due within one year – charitable company

	2019 £	2018 £
Amounts due to subsidiary undertakings	1	1
VAT payable	10,189	32,548
PAYE	40,474	32,401
Pension payable	10,309	8,853
Accruals and deferred income	88,057	107,384
Total	149,030	181,187

Deferred income represents advertising, fundraising events ticket sales, challenge event fees and study days income received for events held after the year end.

19. Unrestricted funds

	Balance at 6 April 2018 £	Income / Additions £	Expenditure £	Transfers £	Balance at 31 March 2019 £
General					
Charitable Fund	651,516	1,785,196	(1,824,573)	204,576	816,715
	651,516	1,785,196	(1,824,573)	204,576	816,715
Designated					
Property Fund	1,647,726	-	(39,668)	-	1,608,058
Intangible Assets	-	-	-	9,511	9,511
Deposits from SIA Groups:					
SIA-Merseyside	9,165	6,686	(7,610)	-	8,241
Service Development Fund	281,917	-	(67,830)	(214,087)	-
	1,938,808	6,686	(115,108)	(204,576)	1,625,810
Charity Unrestricted Funds	2,590,324	1,791,882	(1,939,681)	-	2,442,525

Designated funds

Property Fund – Future depreciation costs of SIA premises

Intangible Assets Fund – Future depreciation costs of intangible assets

SIA Groups – the amount represents accumulated funds from individual groups held by head office to support local activities.

Service Development Fund: – to develop the following services:

SCI Nurse Specialist Service – to cover running costs of SCI Nurse Specialist Service to provide clinical support/advocacy to newly injured people and SIA members undergoing planned re-admission to hospital for treatment unrelated to their impairment.

Volunteer Recruitment Service – to cover running costs of a Volunteer Co-ordinator, who will oversee recruitment, induction, training and retention of those wishing to volunteer for the organisation across a range of activities.

The balance of the Service Development Fund was transferred into the General Fund on 31 March 2019.

Notes to the financial statements

for the year ended 31 March 2019

20. Restricted funds

	Balance at 6 April 2018 £	Incoming £	Outgoing £	Transfers £	Balance at 31 March 2019 £
Movement in resources:					
The Alice Ellen Cooper-Dean Charitable Foundation	-	5,000	(1,667)	-	3,333
Persula Foundation	-	10,000	(6,667)	-	3,333
The Eveson Charitable Trust	-	5,000	(1,250)	-	3,750
ABF The Soldiers' Charity	-	21,000	(8,833)	-	12,167
The Rothschild Foundation	-	5,000	(1,667)	-	3,333
CHK Charities Ltd	-	5,000	(2,083)	-	2,917
Queen Mary's Roehampton Trust	-	10,000	(2,500)	-	7,500
The Sobell Foundation	-	25,000	(14,583)	-	10,417
The Elizabeth & Prince Zaiger Trust	4,000	-	(4,000)	-	-
EBM Charitable Trust	-	10,000	(3,333)	-	6,667
Childwick Trust	10,000	-	(8,333)	-	1,667
RAF Benevolent Fund	-	6,000	(3,000)	-	3,000
The Priory Foundation	-	32,475	(27,062)	-	5,413
The February Foundation	-	5,000	(2,500)	-	2,500
The Royal British Legion	-	5,141	(428)	-	4,713
The UPS Foundation	10,500	-	(10,500)	-	-
Stafford Trust	5,000	-	(5,000)	-	-
The James Tudor Foundation	-	10,000	(8,333)	-	1,667
The ALBORADA Trust	-	25,000	(25,000)	-	-
Rothera Charitable Settlement	-	7,500	(6,250)	-	1,250
Austen & Hope Pilkington Charitable Trust	-	5,000	(5,000)	-	-
The Goldcrest Charitable Trust	-	5,000	(4,167)	-	833
The TJH Foundation	-	10,000	(8,333)	-	1,667
The Sir Peter O'Sullivan Charitable Trust	-	32,000	-	-	32,000
Boots Charitable Foundation	-	6,956	(1,159)	-	5,797
The National Lottery Community Fund: Awards for All England	-	10,000	-	-	10,000
The MacRobert Trust	-	5,000	(418)	-	4,582
Other small grants	11,600	76,353	(87,953)	-	-
	41,100	337,425	(250,019)	-	128,506

All of the income and expenditure above is attributable to the parent entity only.

Restricted Funds

The UPS Foundation To support the SIA Academy.	The Persula Foundation To support the Care Cuts campaign.	The Goldcrest Charitable Trust To support the Peer Support service.
Childwick Trust To support the SCI Nurse Specialist service.	EBM Charitable Trust To support the Peer Support service.	Austen and Hope Pilkington Trust To support the SCI Nurse Specialist service.
Stafford Trust To support SIA's work with individuals from the Armed Forces.	Queen Mary's Roehampton Trust To support SIA's work with individuals from the Armed Forces.	CHK Charities Ltd To support the Peer Support service.
The Elizabeth and Prince Zaiger Trust To support the Peer Support service.	The National Lottery Community Fund: Awards for All England To support the Peer Support service.	The Rothschild Foundation To support the Peer Support service.
The Sir Peter O'Sullivan Charitable Trust To support the SCI Nurse Specialist service.	The Priory Foundation To support the Peer Support service.	The February Foundation To support the Peer Support service.
The ALBORADA Trust To support the SCI Nurse Specialist service.	Rothera Charitable Settlement To support the Peer Support service.	The Alice Ellen Cooper Dean Charitable Foundation To support the Peer Support service.
The Sobell Foundation To support the SCI Nurse Specialist service.	Boots Charitable Trust To support the Peer Support service.	The Eveson Charitable Trust To support SIA's work with individuals from the Armed Forces.
ABF The Soldiers' Charity To support SIA's work with individuals from the Armed Forces.	RAF Benevolent Fund To support SIA's work with individuals from the Armed Forces.	The MacRobert Trust To support SIA's work with individuals from the Armed Forces.
The James Tudor Foundation To support the SCI Nurse Specialist service.	The Royal British Legion To support SIA's work with individuals from the Armed Forces.	Other small grants To support the Advice Line and Peer Support Services.
The TJH Foundation To support the SCI Nurse Specialist service.		

21. Analysis of net assets between funds of the charitable company

	Unrestricted Funds £	Designated Funds £	Restricted Funds £	Total Funds £
Fixed assets	-	1,617,569	-	1,617,569
Investments	1	-	-	1
Net current assets	816,714	8,241	128,506	953,461
	816,715	1,625,810	128,506	2,571,031

22. Related party transactions

During the year, the Spinal Injuries Association and its trading subsidiary received £61,995 from Slater and Gordon (UK) LLP. Darren Hughes, a Trustee of Spinal Injuries Association, is employed by Slater and Gordon Lawyers.

The Spinal Injuries Association also received £15,900 from Bolt Burdon Kemp Solicitors. Raquel Sigantoria, a Trustee of the Spinal Injuries Association, is employed by Bolt Burdon Kemp Solicitors. (Values exclude VAT where applicable).

THANK YOU TO OUR SUPPORTERS

We would like to thank the following trusts and organisations for their donations of £5,000 or more to fund our services throughout the year. It would be impossible for us to help our members and their families and friends without such invaluable support.

Trusts

The UPS Foundation
Childwick Trust
Stafford Trust
The Elizabeth and Prince Zaiger Trust
The Stewarts Foundation
The Sir Peter O'Sullivan Charitable Trust
The ALBORADA Trust
The Sobell Foundation
ABF The Soldiers' Charity
The James Tudor Foundation
The TJH Foundation
Persula Foundation
EBM Charitable Trust
Queen Mary's Roehampton Trust
The National Lottery Community Fund: Awards for All England
Rothera Charitable Settlement
Boots Charitable Trust
RAF Benevolent Fund
The Royal British Legion
The Goldcrest Charitable Trust
Austin and Hope Pilkington Trust
CHK Charities Ltd
The Rothschild Foundation
The February Foundation
The Alice Ellen Cooper Dean Charitable Foundation
The Eveson Charitable Trust
The MacRobert Trust

Legacy gifts are important to SIA. We are grateful to be remembered by:

Eileen Anderson
Max Filmer Bowker
Margaret Cronin
Frederick Dunford
Stuart William Rees
John Glencorse Robertson

Organisations

Active Assistance
Bolt Burdon Kemp
Brethertons LLP
Bullen Healthcare Ltd
Bush & Co Rehabilitation Ltd
CFG Law
Coloplast Ltd
Gerard McDermott QC Ltd
Harrowells Solicitors
Hollister Inc UK
Irwin Mitchell LLP
Leigh Day
Levenes Solicitors
NewLaw Solicitors
No5 Chambers
Outer Temple Chambers
Pertemps
Premium Care Solutions
Royds Withy King
Simpson Millar LLP
Slater and Gordon UK LLP
Total Community Care Ltd
Trethowans LLP
ROKIT Williams Racing



CONTACT US

Spinal Injuries Association

SIA House
2 Trueman Place
Milton Keynes, MK6 2HH

Tel: 01908 604 191

Email: sia@spinal.co.uk

Freephone Advice Line: 0800 980 0501

www.spinal.co.uk

Registered Charity No: 1054097
Registered Company No: 3175203

As a charity, we rely on donations and legacies from individuals to continue providing expert support to everyone touched by spinal cord injury.